

SINGER

9500/9600

SINGER

SINGER FACTORY

MONZA

List of parts

Sewing Machines Series

9500/9600

From the library of: Diamond Needle Corp

contents

MECHANISM GROUP NO.		PAGE
1	FRONT, BACK and SIDES COVERS	4
	TOP COVER	6
	MACHINE BASE and CLOTH PLATE	8
2	NEEDLE BAR and DRIVE MECHANISM	10
	NEEDLE HOOK and PLATES	12
	PRESSURE BAR and TENSION	14
3	FEED and HOOK DRIVE MECHANISM (Tubular Bed)	16
	FEED and HOOK DRIVE MECHANISM (Flat Bed)	18
4	STITCH LENGTH and REVERSE MECHANISM	20
	BUTTONHOLER, FEED REGULATOR and CAM CONTROL FEED ENGAGING MECHANISM	22
	CAM CONTROL FEED and STITCH BALANCING MECHANISM	24
5	BIGHT AMPLITUDE and NEEDLE POSITION SELECTORS	26
	CAM STACK and PATTERN SELECTOR	30
6	ATTACHMENTS	32
	MACHINE CARRYING CASE and BOTTOM COVER	34
7	ELECTRICS	36

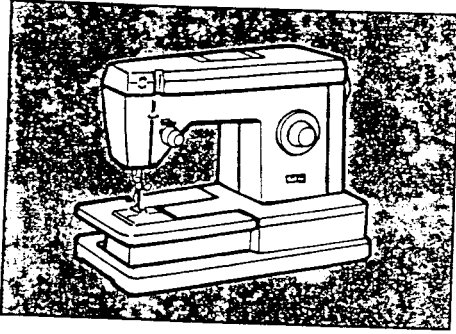
9500/9600 series includes the following models:

9502 Flat Bed	9602 Tubular Bed
9505 Flat Bed	9605 Tubular Bed
9518 Flat Bed	9606 Tubular Bed
	9608 Tubular Bed
	9610 Tubular Bed
	9612 Tubular Bed
	9614 Tubular Bed
	9618 Tubular Bed

9500/9600 SERIES

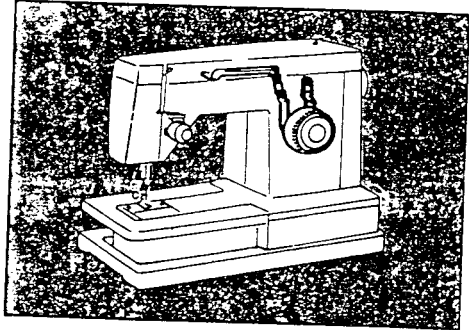
Group

1

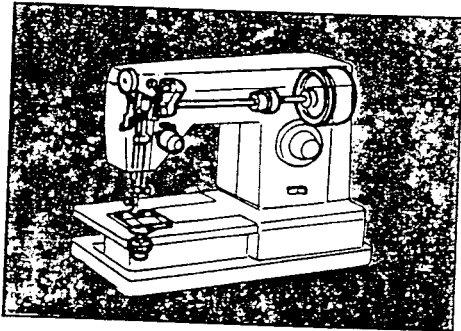


Group

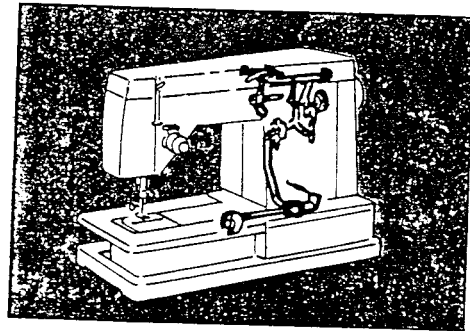
4



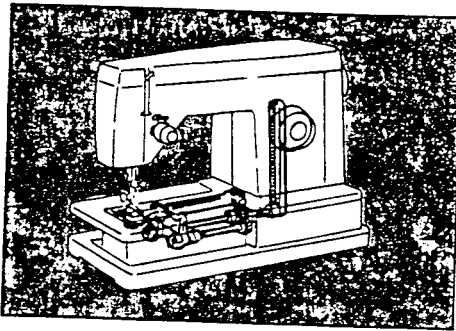
2



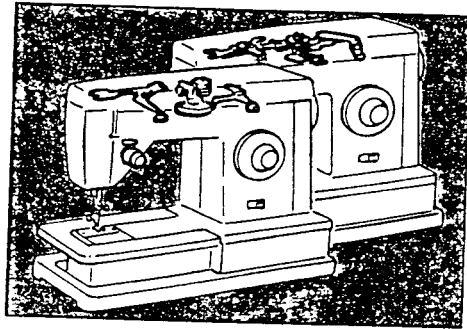
4



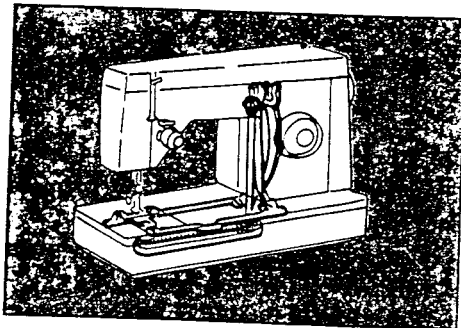
3



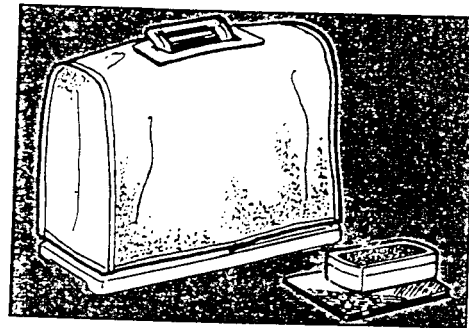
5



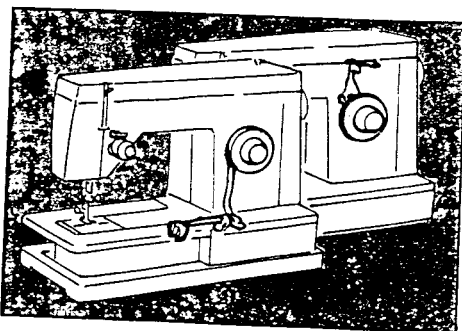
3



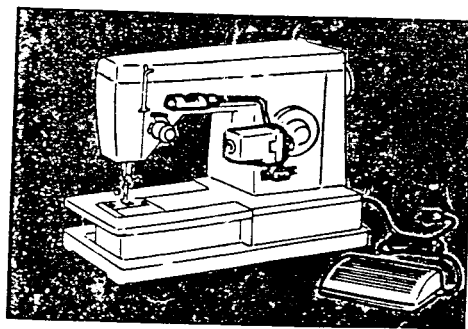
6

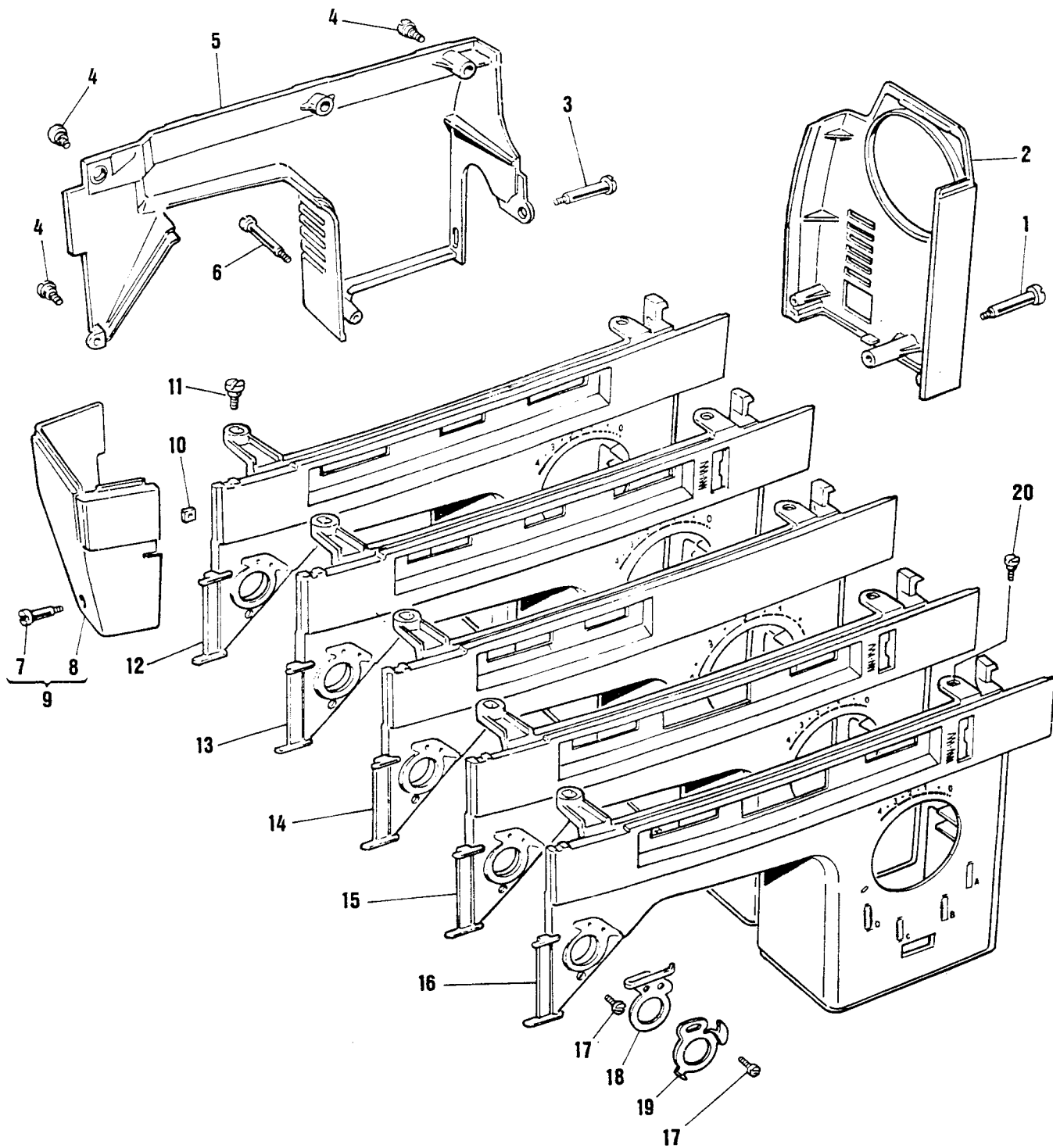
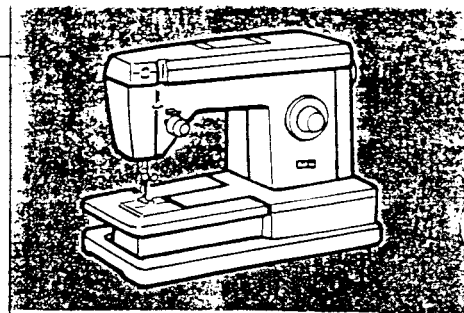


4



7



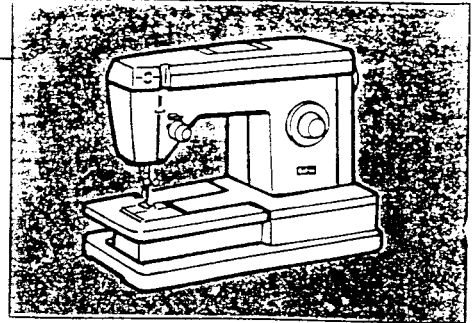


From the library of: Diamond Needle Corp

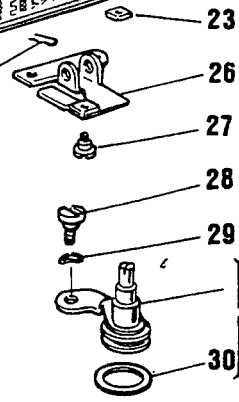
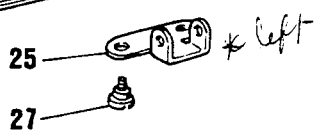
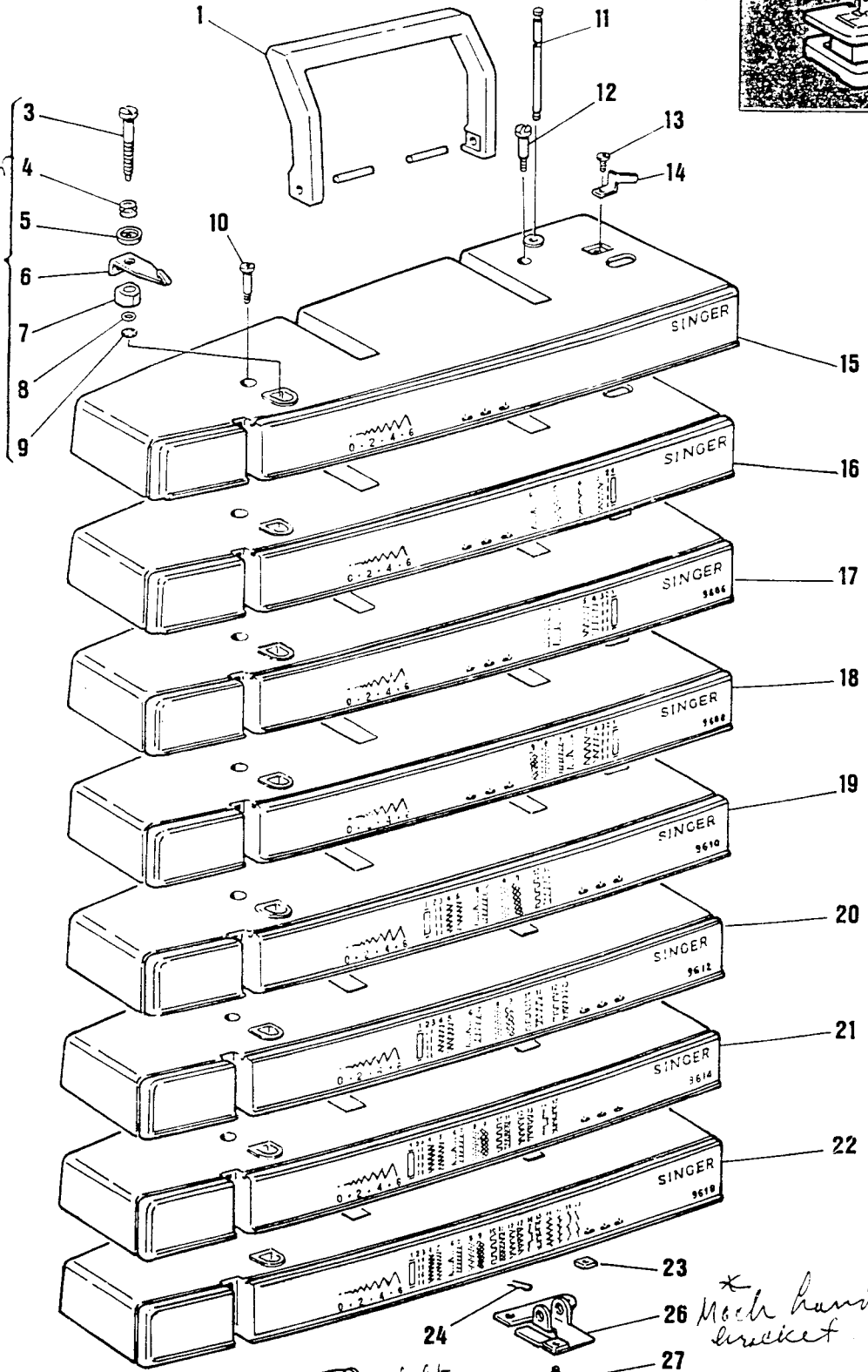
LIST OF PARTS FOR MACHINES 9500/9600 SERIES

REF. N.	PART. N°	PART DESCRIPTION	9605	9505	9518	9618	9614	9612	9610	9608	9606	9602	9502
1	354655-451	Arm cover screw	•	•	•	•	•	•	•	•	•	•	•
2	447606-451	Arm cover (hand wheel side)	•	•	•	•	•	•	•	•	•	•	•
3	354659-451	Screw	•	•	•	•	•	•	•	•	•	•	•
4	139910	Screw	•	•	•	•	•	•	•	•	•	•	•
5	352494-451	Arm cover back	•	•	•	•	•	•	•	•	•	•	•
6	354252	Screw	•	•	•	•	•	•	•	•	•	•	•
7	354662-451	Face Plate screw	•	•	•	•	•	•	•	•	•	•	•
8	447607-451	Face Plate	•	•	•	•	•	•	•	•	•	•	•
9	447824-451	Face Plate cpl.	•	•	•	•	•	•	•	•	•	•	•
10	53640	Nut	•	•	•	•	•	•	•	•	•	•	•
11	421719-451	Screw	•	•	•	•	•	•	•	•	•	•	•
12	447889-451	Arm front cover cpl. (For Europe)	•	•									
	447889-452	Arm front cover cpl. (For USA)	•	•									
13	447851-451	Arm front cover cpl. (For USA)									•		
	447611-451	Arm front cover cpl. (For Europe)									•		
	447852-451	Arm front cover cpl. (For Europe)								•			
	447834-451	Arm front cover cpl. (For USA)								•			
14	447610-451	Arm front cover cpl. (For Europe)										•	•
	447833-451	Arm front cover cpl. (For USA)										•	•
15	447835-451	Arm front cover cpl. (For Europe)						•	•				
	447605-451	Arm front cover cpl. (For USA)						•	•				
	447835-452	Arm front cover cpl. (For Europe)					•						
	447605-452	Arm front cover cpl. (For USA)					•						
16	447835-453	Arm front cover cpl. (For Europe)			•	•							
	447605-453	Arm front cover cpl. (For USA)			•	•							
17	141808	Screw	•	•	•	•	•	•	•	•	•	•	•
18	446958	Thread guide (upper)	•	•	•	•	•	•	•	•	•	•	•
19	44392	Tension Thread guide	•	•	•	•	•	•	•	•	•	•	•
20	421720-452	Screw	•	•	•	•	•	•	•	•	•	•	•

MICHELLE



*Sobbin
munder
Complete*

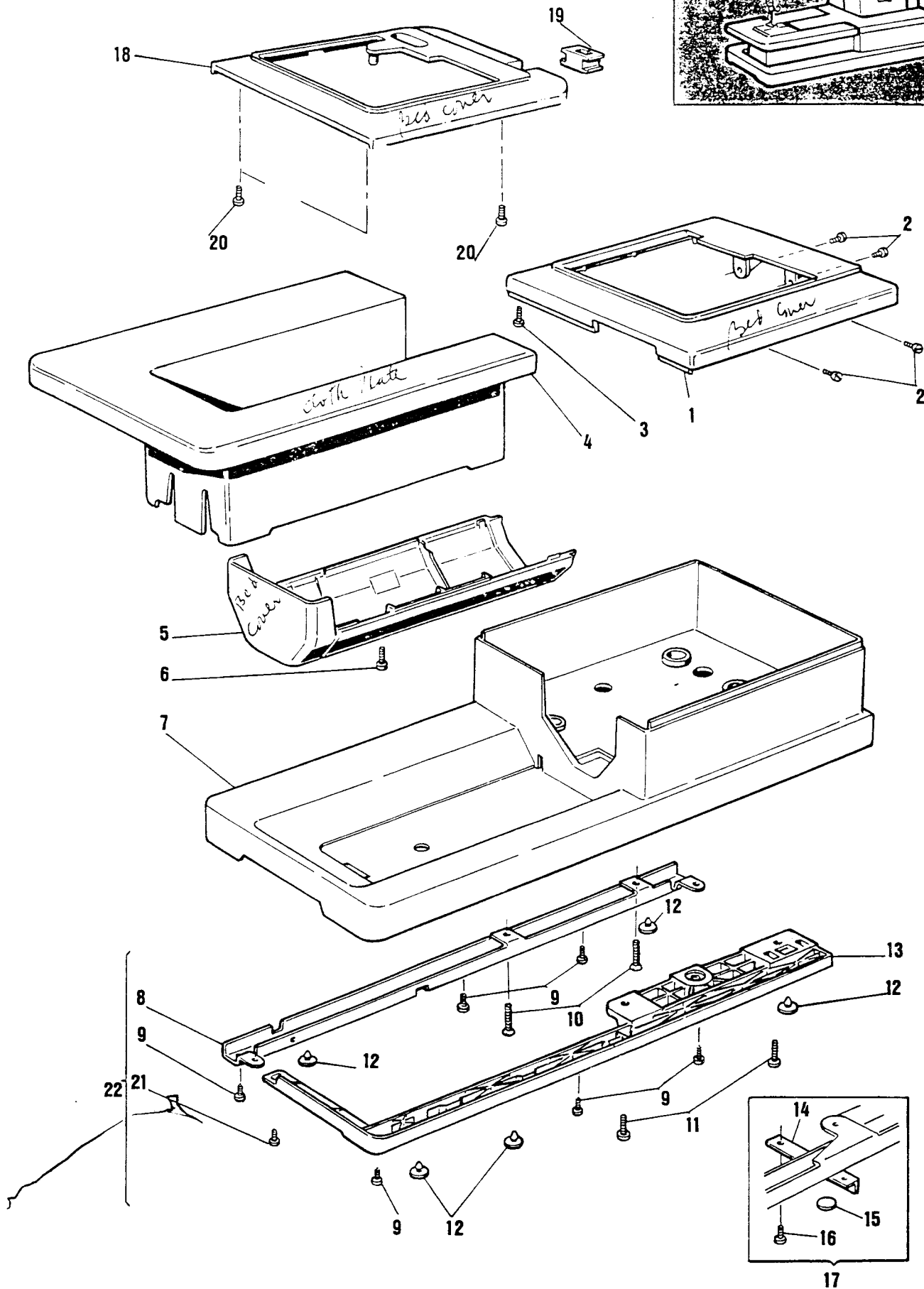
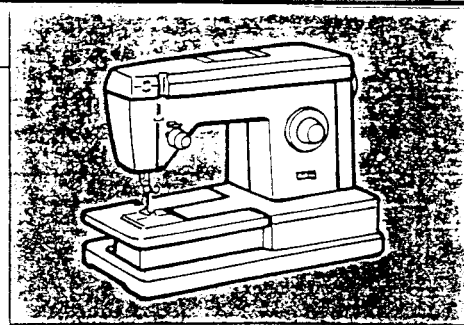


** Hook handle mounting
bracket right*

*Sobbin
munder
Complete*

LIST OF PARTS FOR MACHINES 9500/9600 SERIES

REF. N.	PART. N°	PART DESCRIPTION	9605	9505	9518	9618	9614	9612	9610	9608	9606	9602	9502
1	352926—455	Machine handle	•	•	•	•	•	•	•	•	•	•	•
2	352515—456	Bobbin winder tension cpl.	•	•	•	•	•	•	•	•	•	•	•
3	44751	Bobbin winder tension stud	•	•	•	•	•	•	•	•	•	•	•
4	45847	Bobbin winder tension disc spring	•	•	•	•	•	•	•	•	•	•	•
5	45915	Bobbin winder tension disc	•	•	•	•	•	•	•	•	•	•	•
6	352514	Tension bracket and thread guide	•	•	•	•	•	•	•	•	•	•	•
7	44770—460	Tension bracket spacer	•	•	•	•	•	•	•	•	•	•	•
8	352737	Tension stud washer	•	•	•	•	•	•	•	•	•	•	•
9	44447	Tension stud retaining ring	•	•	•	•	•	•	•	•	•	•	•
10	421720—451	Arm top cover screw	•	•	•	•	•	•	•	•	•	•	•
11	44998—452	Arm top cover spool pin (retractable)	•	•	•	•	•	•	•	•	•	•	•
12	44786—452	Arm top cover screw <i>141788-892</i>	•	•	•	•	•	•	•	•	•	•	•
13	141808	Bobbin winder stop screw	•	•	•	•	•	•	•	•	•	•	•
14	44365	Bobbin winder stop	•	•	•	•	•	•	•	•	•	•	•
15	447837—451	Arm top cover (For USA)											•
	447593—451	Arm top cover (For Europe)											•
	447593—453	Arm top cover (Merritt: for Europe)											•
	447837—452	Arm top cover (For USA)										•	
	447593—452	Arm top cover (For Europe)										•	
	447593—454	Arm top cover (Merritt: for Europe)										•	
16	447896—451	Arm top cover (For USA)	•										
	447897—451	Arm top cover (For Europe)	•										
	447897—452	Arm top cover (Merritt: for Europe)	•										
	447894—451	Arm top cover (For USA)		•									
	447895—451	Arm top cover (For Europe)		•									
	447895—452	Arm top cover (Merritt: for Europe)		•									
17	447595—451	Arm top cover (For Europe)										•	
	447595—452	Arm top cover (Merritt: for Europe)										•	
	447850—451	Arm top cover (For USA)										•	
18	447854—451	Arm top cover (For Europe)								•			
	447854—452	Arm top cover (Merritt: for Europe)								•			
	447843—451	Arm top cover (For USA)								•			
19	447856—451	Arm top cover (For USA)								•			
	447600—451	Arm top cover (For Europe)								•			
	447600—452	Arm top cover (Merritt: for Europe)								•			
20	447845—451	Arm top cover (For USA)								•			
	447858—451	Arm top cover (For Europe)								•			
	447858—452	Arm top cover (Merritt: for Europe)								•			
21	447839—451	Arm top cover (For USA)								•			
	447589—451	Arm top cover (For Europe)								•			
	447589—452	Arm top cover (Merritt: for Europe)								•			
22	447841—451	Arm top cover (For USA)								•			
	447591—451	Arm top cover (For Europe)								•			
	447591—453	Arm top cover (Merritt: for Europe)								•			
	447841—452	Arm top cover (For USA)								•			
	447591—452	Arm top cover (For Europe)								•			
	447591—454	Arm top cover (Merritt: for Europe)								•			
23	53640	Bobbin winder stop screw nut	•	•	•	•	•	•	•	•	•	•	•
24	45000	Arm top cover spool pin retaining	•	•	•	•	•	•	•	•	•	•	•
25	352927	Machine handle mounting bracket (left)	•	•	•	•	•	•	•	•	•	•	•
26	352929	Machine handle mounting bracket (right)	•	•	•	•	•	•	•	•	•	•	•
27	113418—451	Screw	•	•	•	•	•	•	•	•	•	•	•
28	422025—451	Bobbin winder lever hinge screw	•	•	•	•	•	•	•	•	•	•	•
29	353457	Washer	•	•	•	•	•	•	•	•	•	•	•
30	15287	Bobbin winder friction ring	•	•	•	•	•	•	•	•	•	•	•
31	421960	Bobbin winder cpl.	•	•	•	•	•	•	•	•	•	•	•



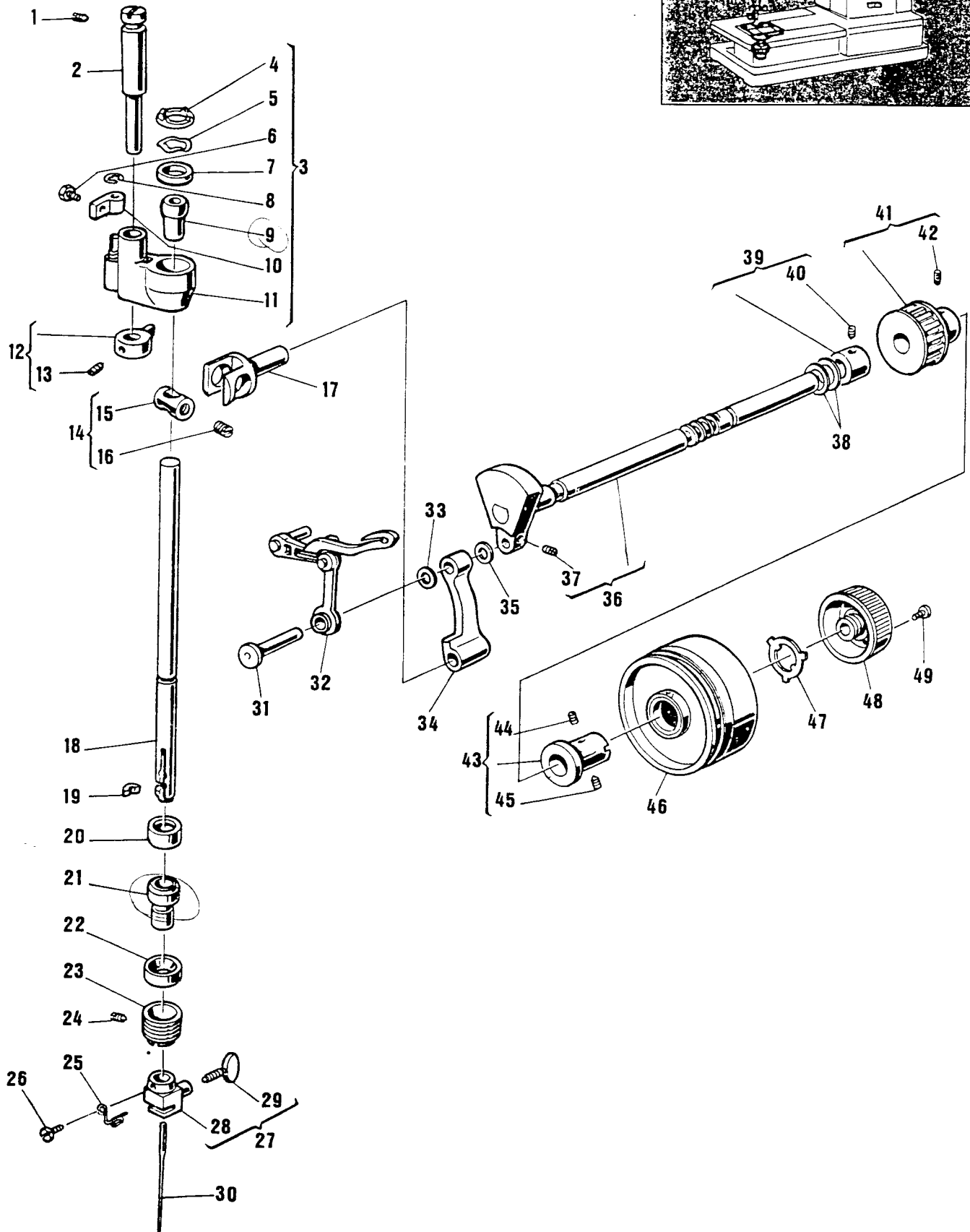
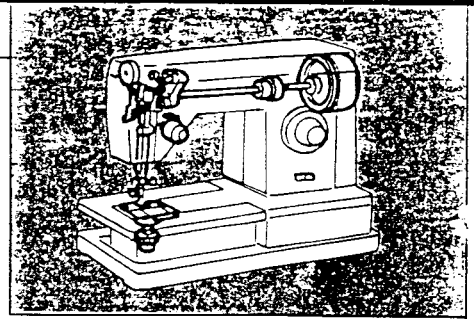
From the library of: Diamond Needle Corp

LIST OF PARTS FOR MACHINES 9500/9600 SERIES

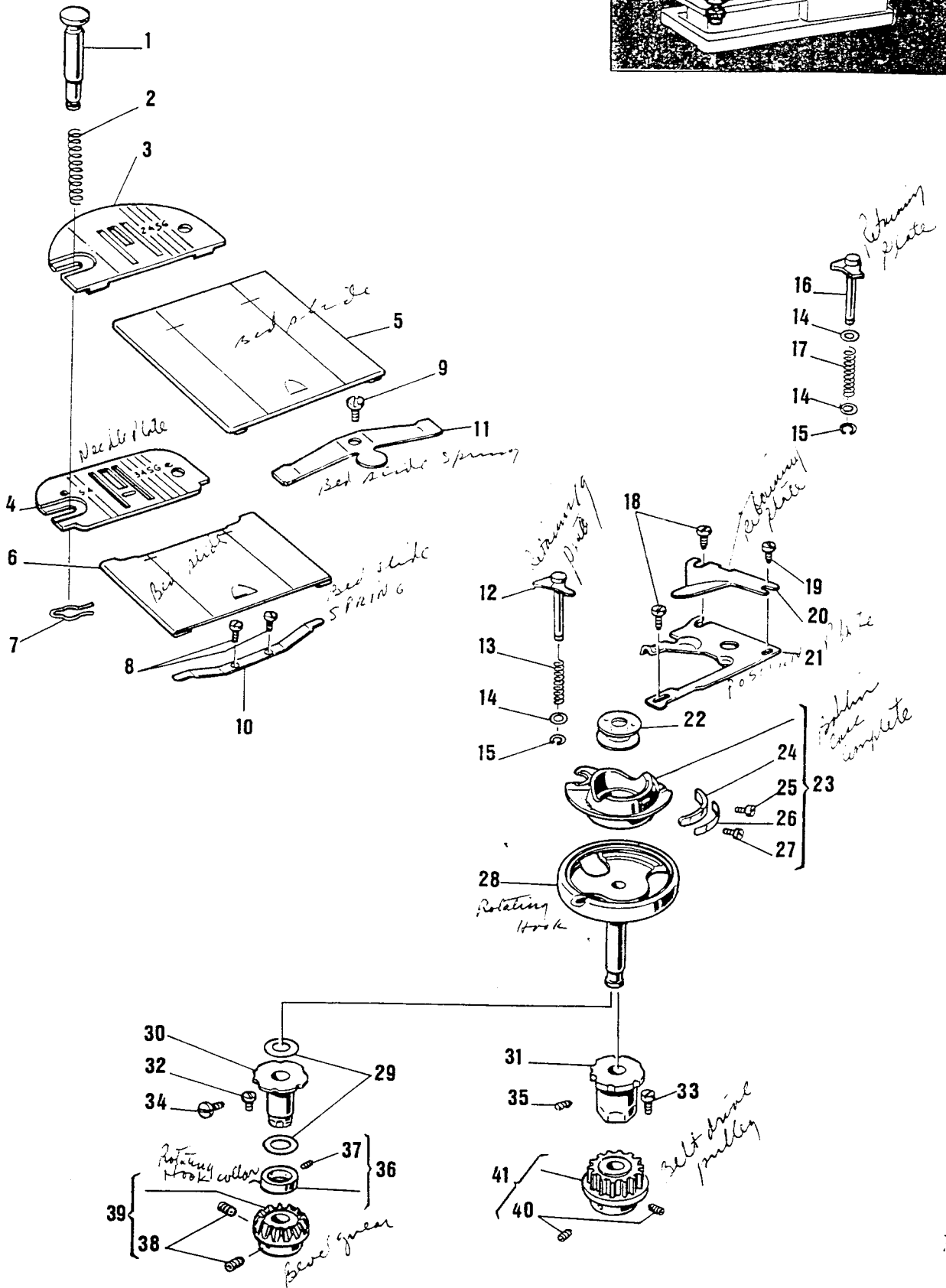
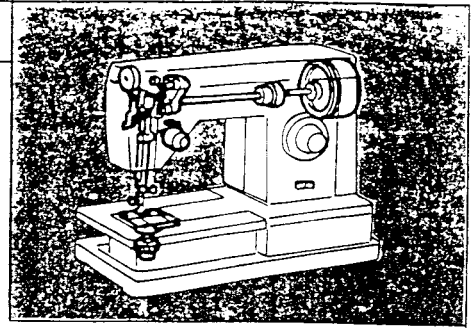
1

REF. N.	PART. N°	PART DESCRIPTION	9605	9505	9518	9618	9614	9610 9612	9606 9608	9602	9502
1	421656-453	Bed cover	●			●	●	●	●	●	
2	139910	Bed cover screw (4)	●			●	●	●	●	●	
3	139986	Bed cover screw (1)	●			●	●	●	●	●	
4	421657-453	Cloth plate	●			●	●	●	●	●	
5	352839-453	Bed cover (tubular)	●			●	●	●	●	●	
6	514690-451	Bed cover (tubular) screw	●			●	●	●	●	●	
7	421655	machine base	●			●	●	●	●	●	
8	421660	Machine base support back	●			●	●	●	●	●	
9	354738-451	Machine support (back and front) screw (8)	●			●	●	●	●	●	
10	354790-451	Base support (back) screw (2)	●			●	●	●	●	●	
11	354745-451	Base support (front) screw (2)	●			●	●	●	●	●	
12	352797	Machine base cushion (5)	●			●	●	●	●	●	
13	421736	Machine base support	●			●	●	●	●	●	
14	352795	Bracket (for cabinets only)	●			●	●	●	●	●	
15	422481-451	Cushion (for cabinets only)	●			●	●	●	●	●	
16	354745-451	Bracket screw (for cabinets only)	●			●	●	●	●	●	
17	353035	Kit cpl. (for cabinets only)	●			●	●	●	●	●	
18	422472-453	Bed cover	●			●	●	●	●	●	
19	352584-453	Grommet		●	●						●
20	139986	Bed cover screws (4)		●	●						●
21	421712	Screw	●	●	●	●	●	●	●	●	●
22	422010-454	Machine base cpl.	●			●	●	●	●	●	

From the library of: Diamond Needle Corp



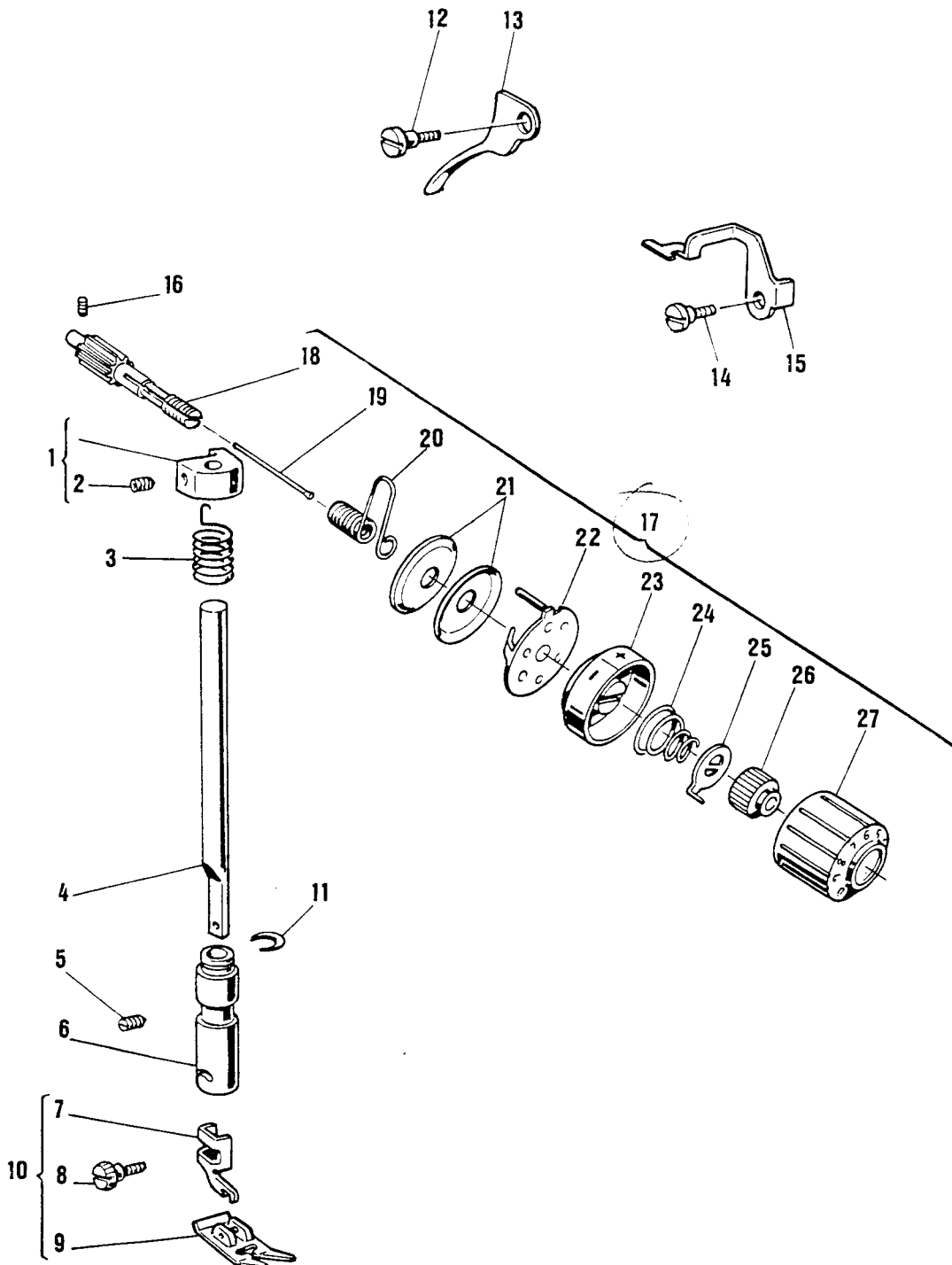
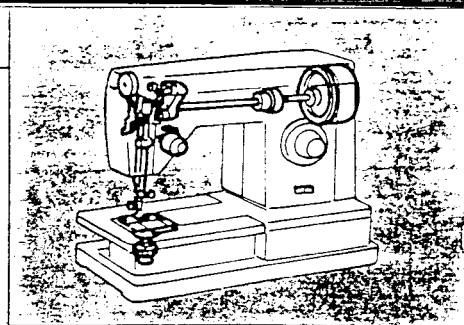
From the library of: Diamond Needle Corp



LIST OF PARTS FOR MACHINES 9500/9600 SERIES

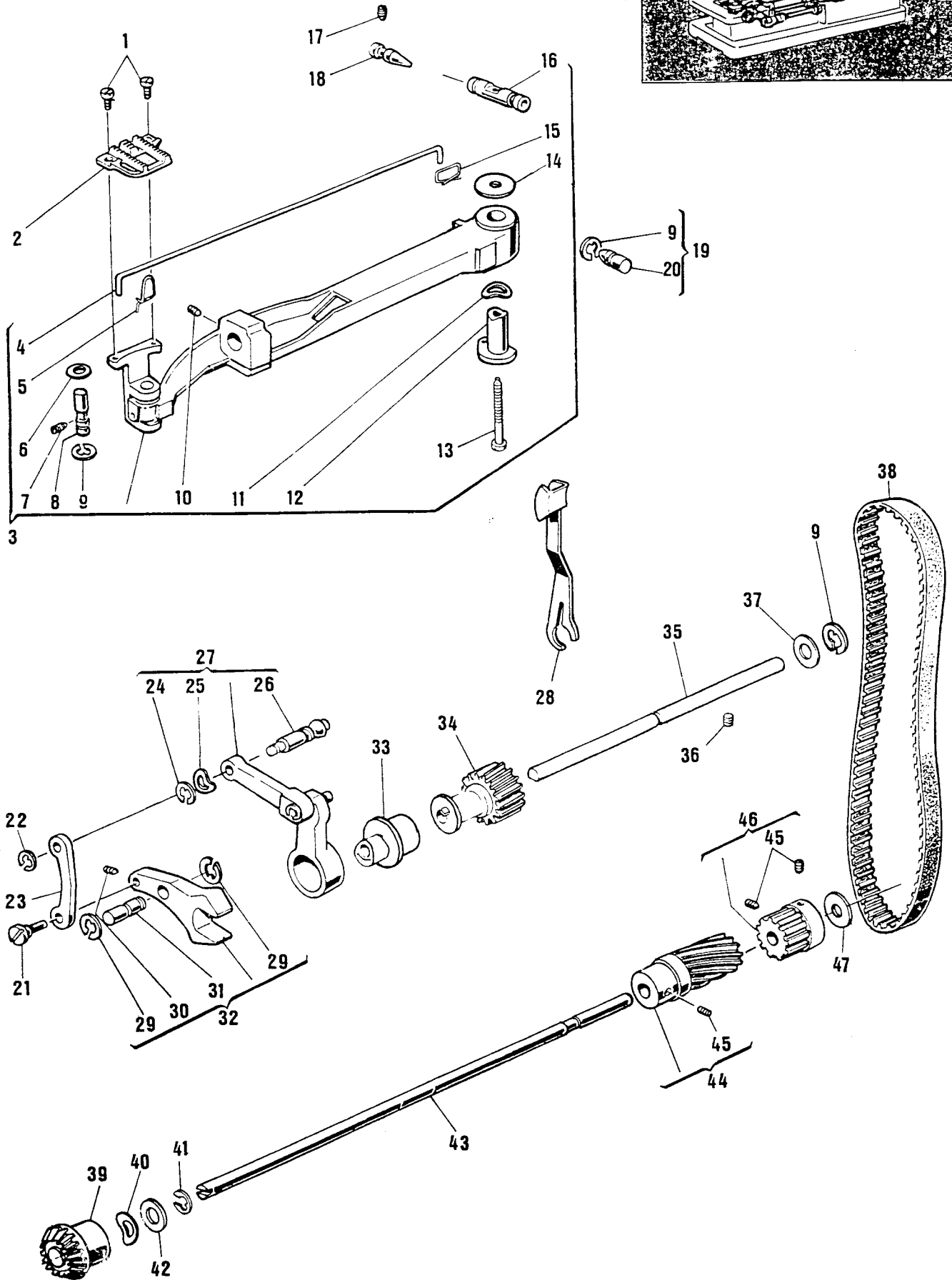
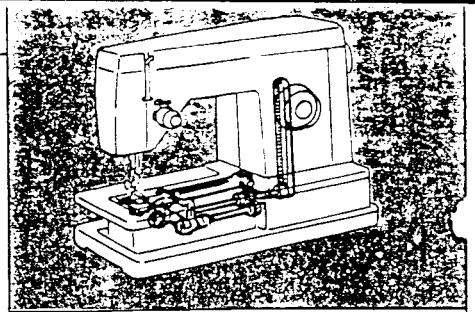
REF. N.	PART. N°	PART DESCRIPTION	9605	9505	9518	9618	9614	9610 9612	9606 9608	9602	9502
1	447572	Needle plate clamp									
2	152930	Needle plate clamp spring	•	•	•	•	•	•	•	•	•
3	447573	Needle plate	•	•	•	•	•	•	•	•	•
4	447580	Needle plate		•	•						•
5	44838	Bed slide	•			•	•	•	•	•	
6	422229	Bed slide		•	•						•
7	179658	Clip	•			•	•	•	•	•	
8	354134	Bed slide spring screw (2)	•	•	•	•	•	•	•	•	•
9	354799	Bed slid spring screw	•			•	•	•	•	•	
10	103344	Bed slide spring		•	•						•
11	37239	Bed slide spring	•			•	•	•	•	•	
12	422129	Retaining plate		•	•						•
13	319735 ✓	Spring	•			•	•	•	•	•	
14	319737-451 ✓	Washer	•			•	•	•	•	•	
15	319736	Clip	•	•	•	•	•	•	•	•	•
16	353123	Retaining plate		•	•						•
17	353122 ✓	Spring		•	•						•
18	354229-451	Position plate screw (2)		•	•						•
19	354227-451	Position plate screw	•	•	•	•	•	•	•	•	•
20	381903	Retaining plate (adjustable)	•	•	•	•	•	•	•	•	•
21	44873	Position plate	•	•	•	•	•	•	•	•	•
22	172336	Bobbin (plastic)	•	•	•	•	•	•	•	•	•
23	421325	Bobbin case cpl.	•	•	•	•	•	•	•	•	•
24	310884-452	Tension spring segment	•	•	•	•	•	•	•	•	•
25	139975	Tension spring segment screw	•	•	•	•	•	•	•	•	•
26	310883	Tension spring	•	•	•	•	•	•	•	•	•
27	354183	Tension regulating screw	•	•	•	•	•	•	•	•	•
28	353104	Rotating hook	•	•	•	•	•	•	•	•	•
29	506164	Washer (2)	•	•	•	•	•	•	•	•	•
30	353237	Flanged bushing (Eccentric)	•		•	•	•	•	•	•	
31	446942	Flanged bushing (Eccentric)	•		•	•	•	•	•	•	
32	354133-451	Position screw	•	•	•	•	•	•	•	•	•
33	139943	Position screw		•	•	•	•	•	•	•	•
34	514689-451	Bushing set screw	•		•	•	•	•	•	•	•
35	141925	Bushing set screw		•	•	•	•	•	•	•	•
36	116084	Rotating hook collar	•		•	•	•	•	•	•	•
37	114312	Collar set screw	•		•	•	•	•	•	•	•
38	514721	Bevel gear set screw (2)	•		•	•	•	•	•	•	•
39	103361-001	Bevel gear cpl.	•		•	•	•	•	•	•	•
40	354774-451	Belt drive pulley set screw (2)	•		•	•	•	•	•	•	•
41	352882	Belt drive pulley cpl.		•							•

From the library of: Diamond Needle Corp

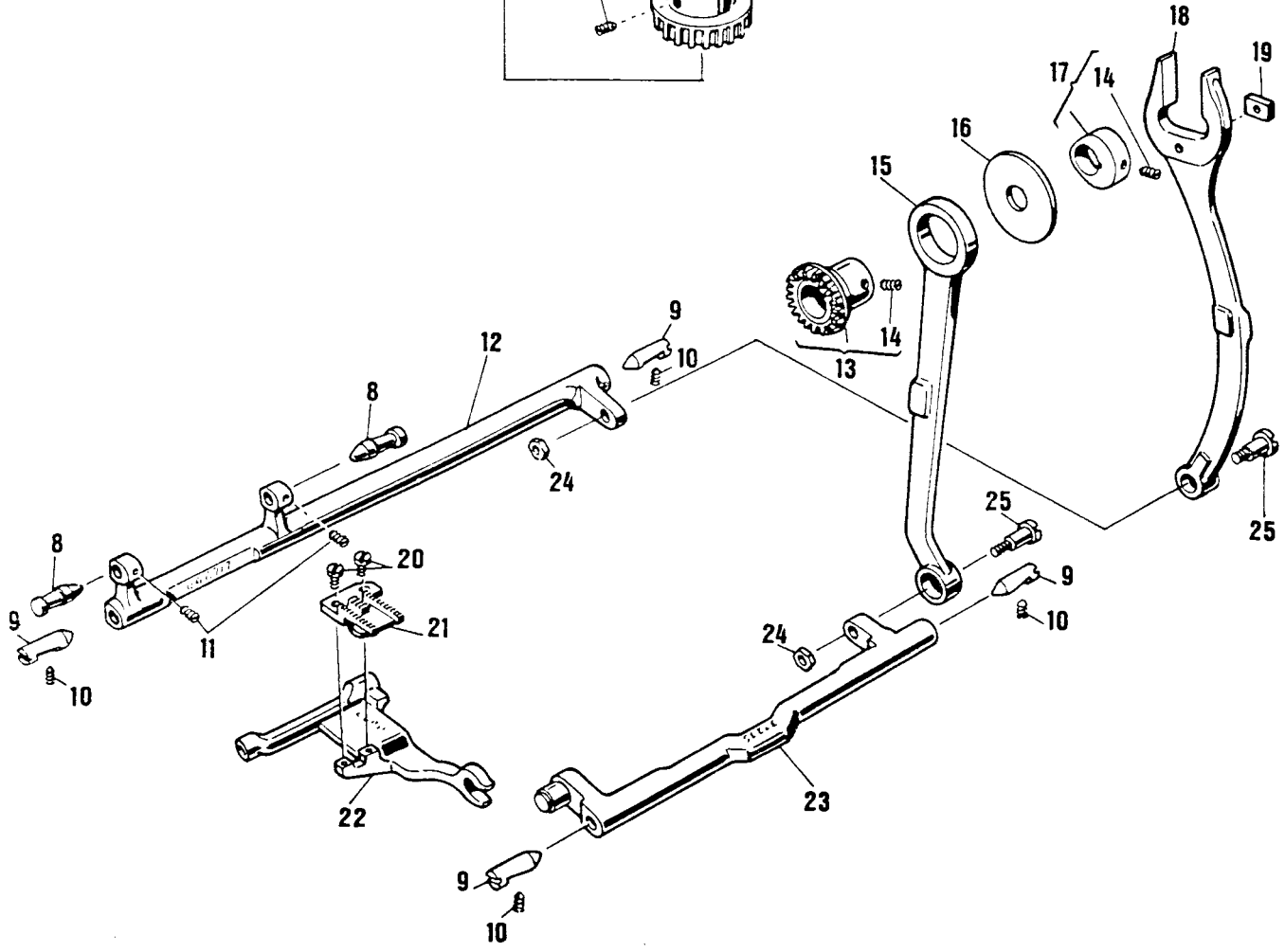
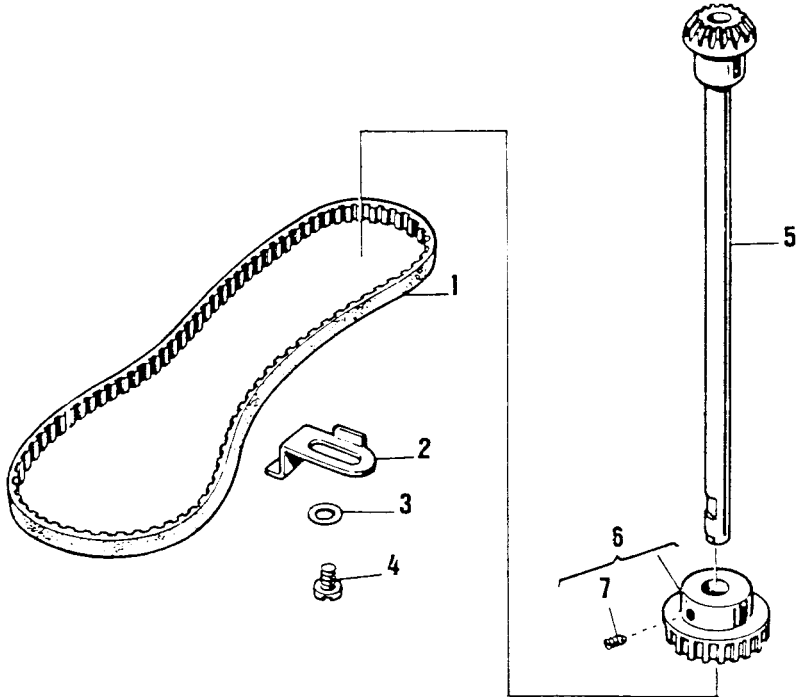
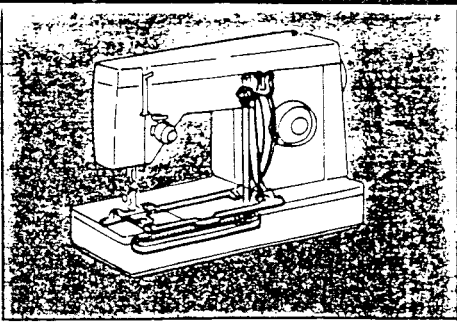


LIST OF PARTS FOR MACHINES 9500/9600 SERIES

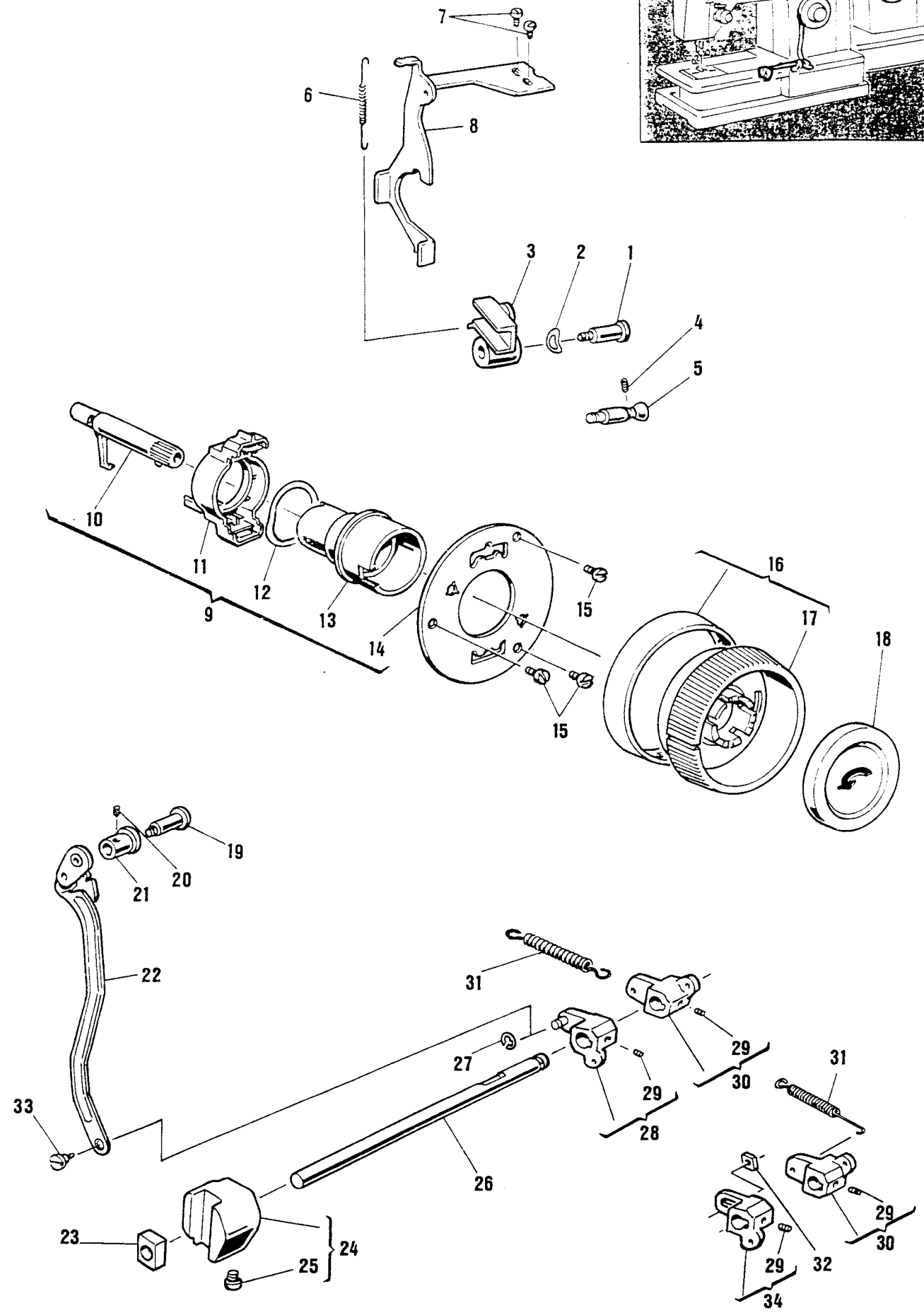
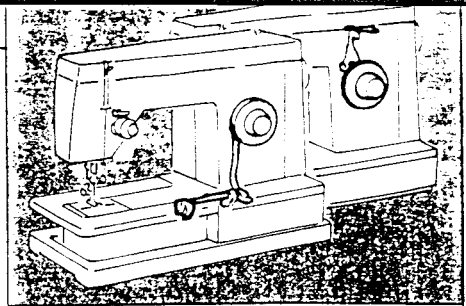
REF. N.	PART. N°	PART DESCRIPTION	9605	9505	9518	9618	9614	9610 9612	9606 9608	9602	9502
1	44444	Presser bar guide bracket cpl.	•	•	•	•	•	•	•	•	•
2	354420—451	Set screw	•	•	•	•	•	•	•	•	•
3	447583	Presser bar spring	•	•	•	•	•	•	•	•	•
4	447582	Presser bar	•	•	•	•	•	•	•	•	•
5	141803	Bushing set screw	•	•	•	•	•	•	•	•	•
6	447584	Presser bar bushing	•	•	•	•	•	•	•	•	•
7	155964	Presser bar snank	•	•	•	•	•	•	•	•	•
8	354135—451	Presser foot thumb screw	•	•	•	•	•	•	•	•	•
9	447806—451	Presser foot (zig-zag) <i>dit Foot</i>	•	•	•	•	•	•	•	•	•
10	447878	Presser foot cpl.	•	•	•	•	•	•	•	•	•
11	447585	Retaining ring	•	•	•	•	•	•	•	•	•
12	141846	Hinge screw	•	•	•	•	•	•	•	•	•
13	44445	Presser bar lifter	•	•	•	•	•	•	•	•	•
14	141786	Hinge screw	•	•	•	•	•	•	•	•	•
15	44829	Tension releasing lever	•	•	•	•	•	•	•	•	•
16	141803	Set screw	•	•	•	•	•	•	•	•	•
17	422403—458	Tension cpl. <i>X</i>	•	•	•	•	•	•	•	•	•
18	44454	Tension stud	•	•	•	•	•	•	•	•	•
19	37986	Tension releasing pin	•	•	•	•	•	•	•	•	•
20	66774—002	Thread take-up spring	•	•	•	•	•	•	•	•	•
21	2102	Tension disc (2)	•	•	•	•	•	•	•	•	•
22	45343	Spring thread guard	•	•	•	•	•	•	•	•	•
23	421739—459	Tension spring cup	•	•	•	•	•	•	•	•	•
24	125314	Tension spring	•	•	•	•	•	•	•	•	•
25	37984	Tension indicator stop washer	•	•	•	•	•	•	•	•	•
26	507405	Tension indicator adaptor	•	•	•	•	•	•	•	•	•
27	422402—458	Tension indicator	•	•	•	•	•	•	•	•	•



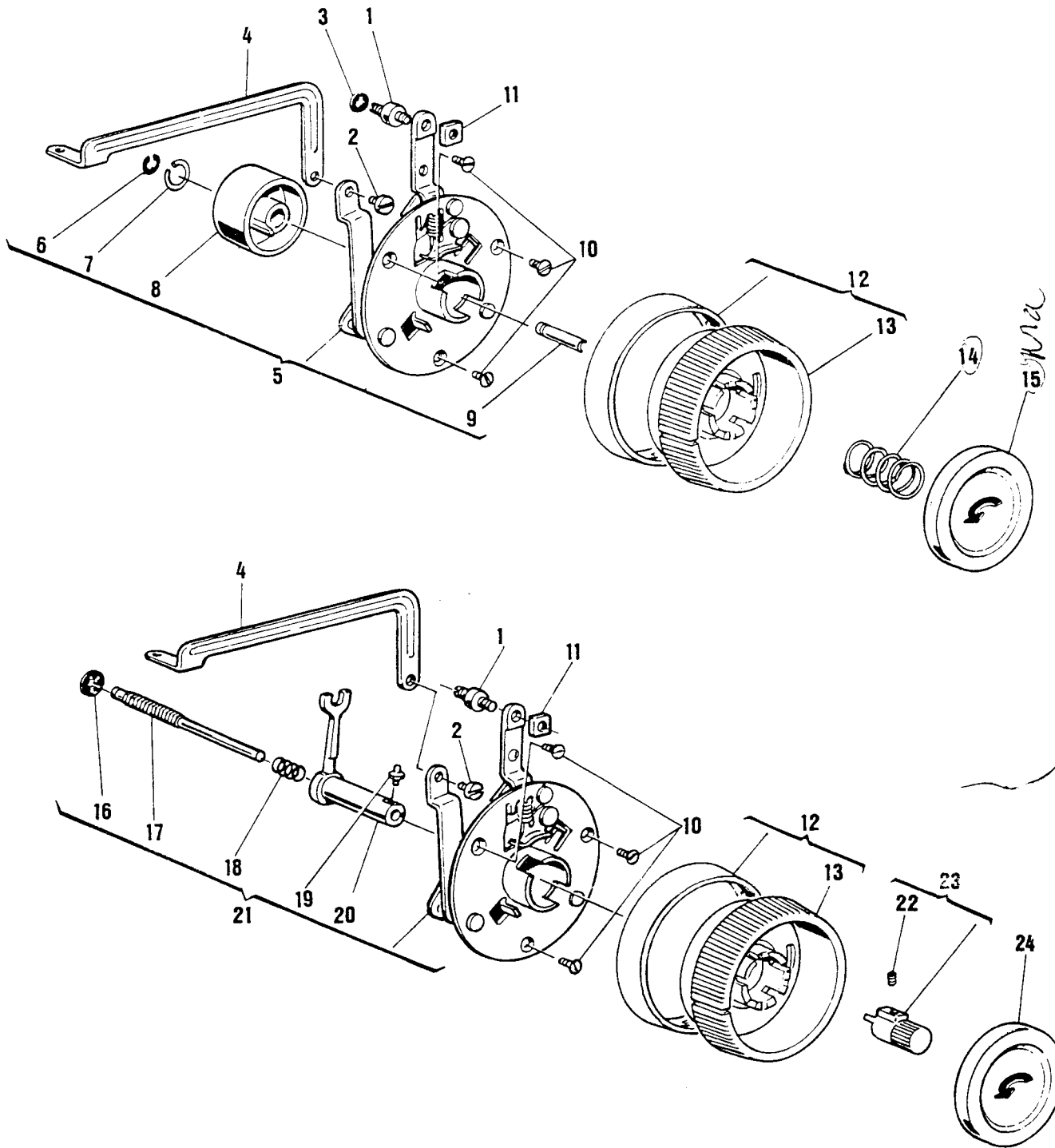
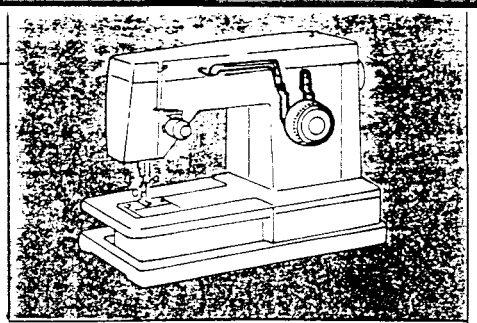
From the library of: Diamond Needle Corp



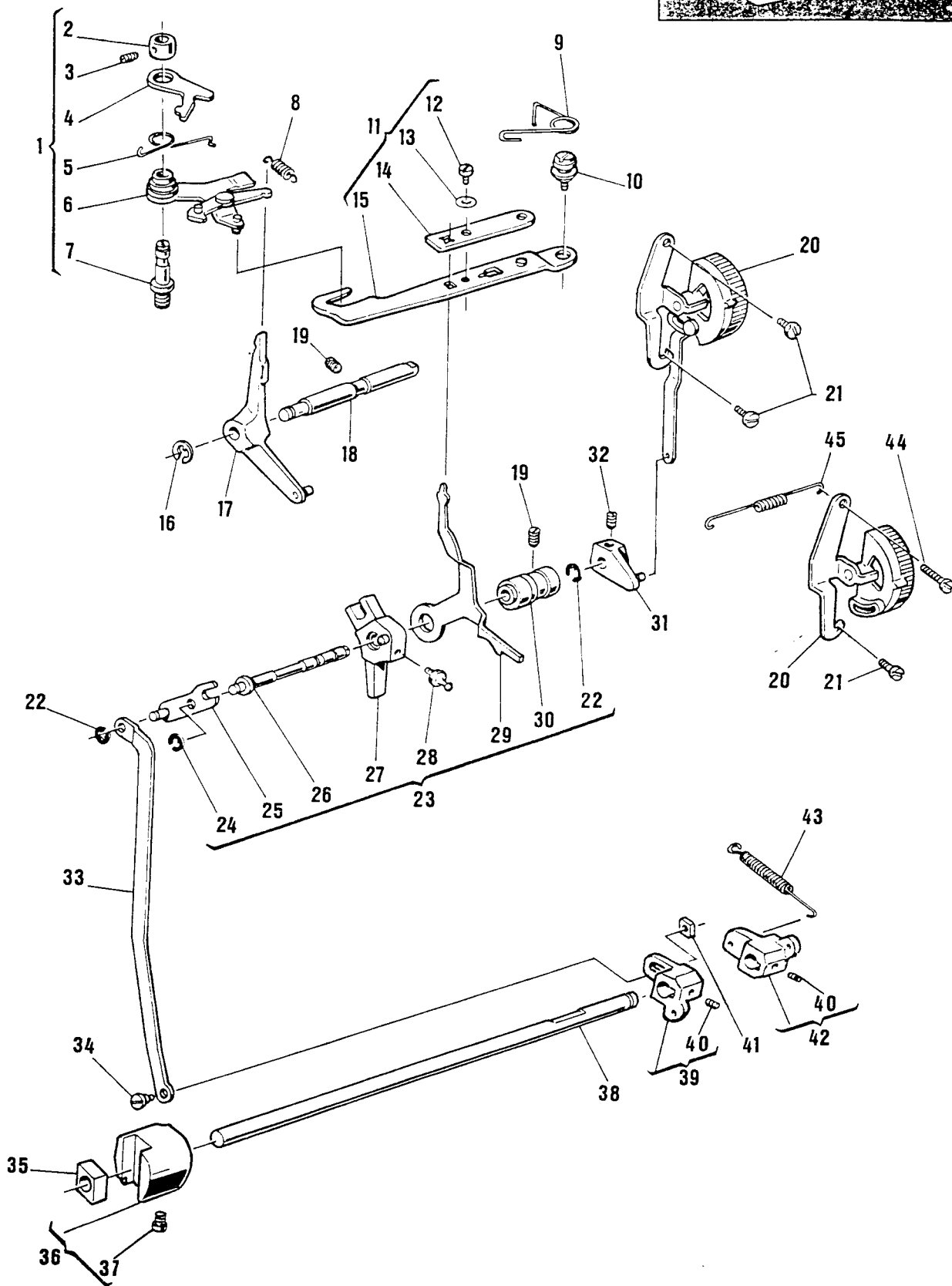
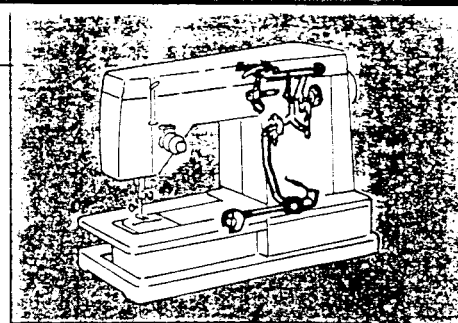
From the library of: Diamond Needle Corp



From the library of: Diamond Needle Corp



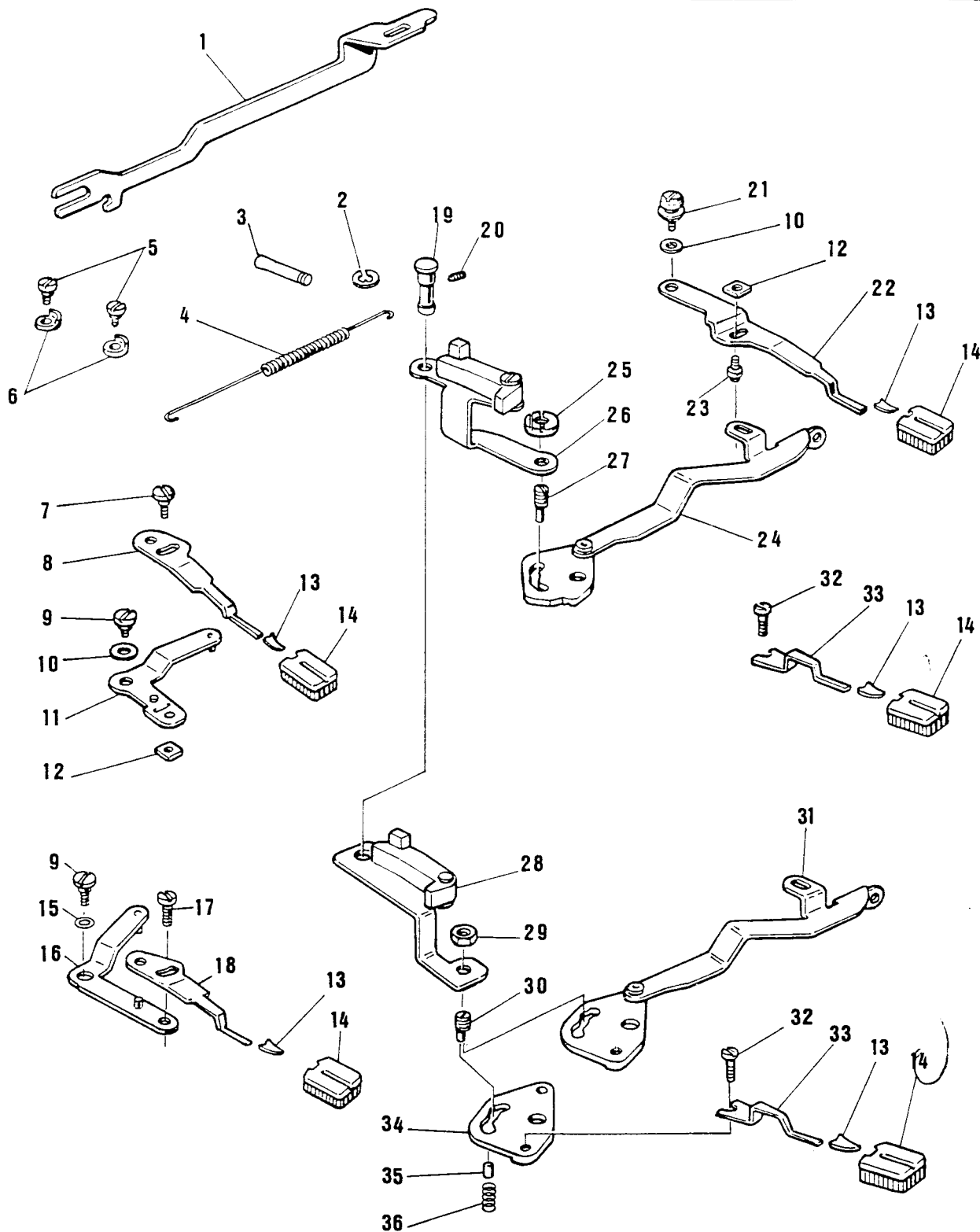
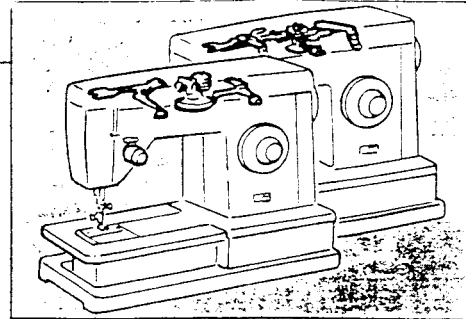
From the library of: Diamond Needle Corp

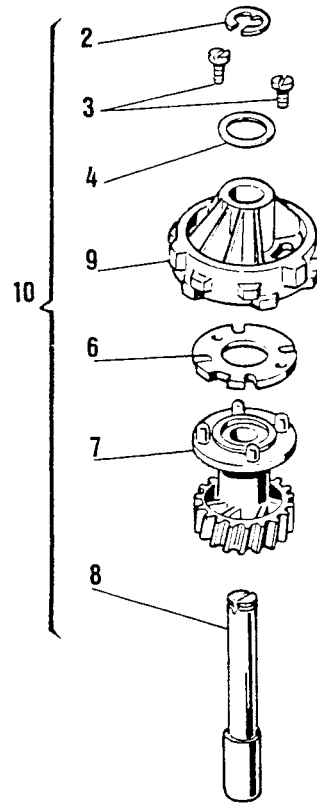
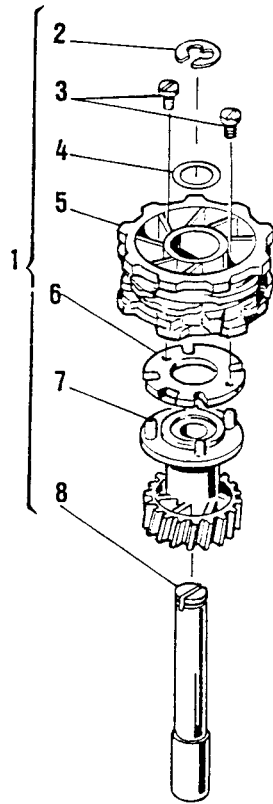
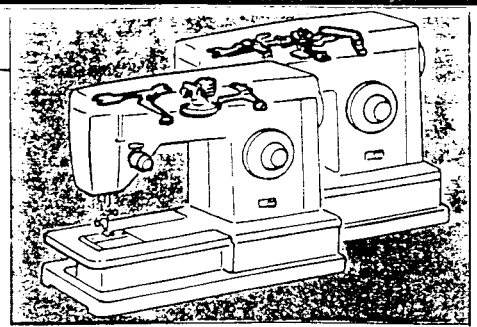


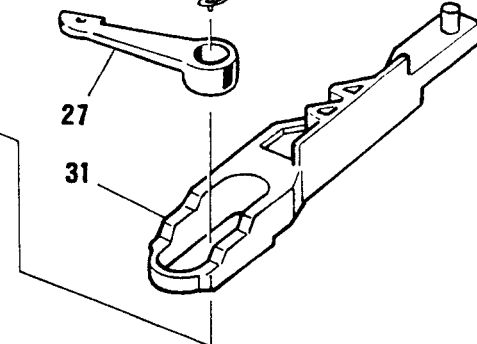
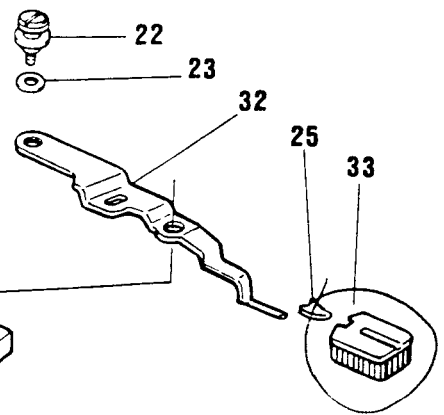
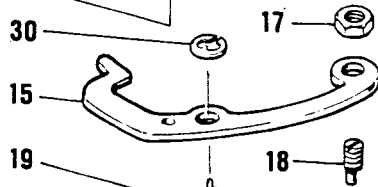
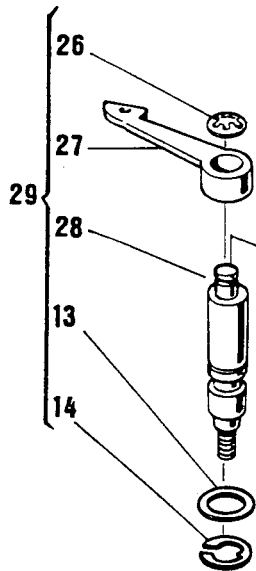
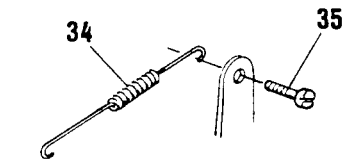
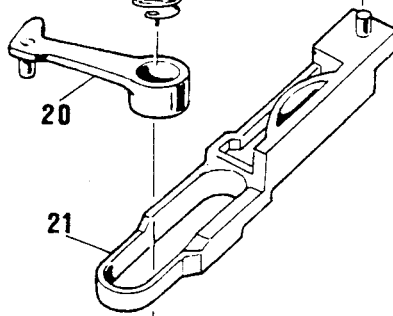
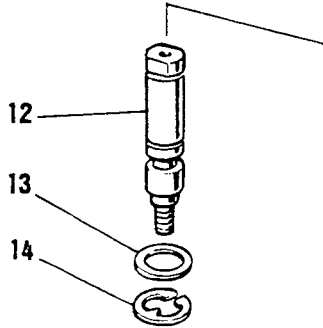
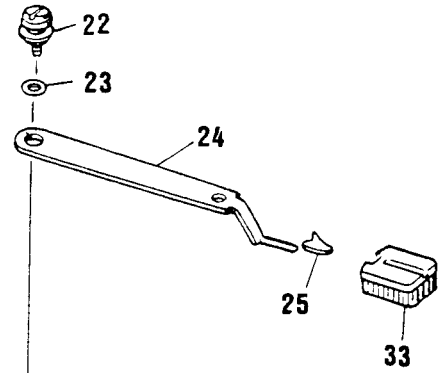
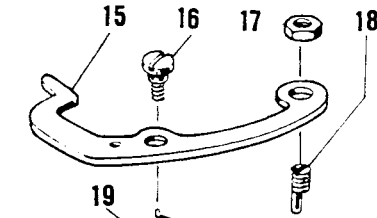
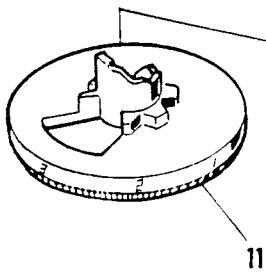
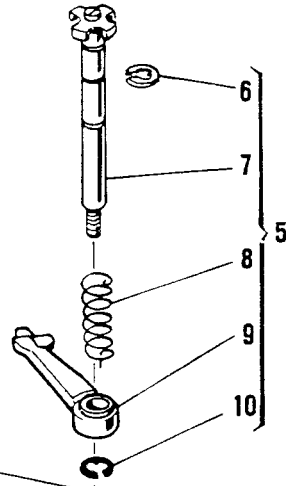
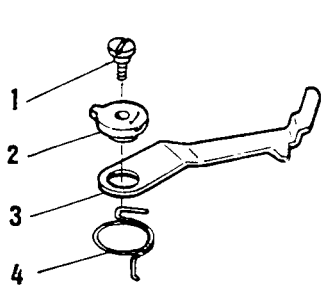
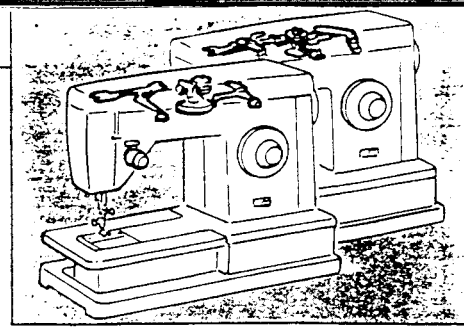
From the library of: Diamond Needle Corp

LIST OF PARTS FOR MACHINES 9500/9600 SERIES

REF. N.	PART. N°	PART DESCRIPTION	9605	9505	9518	9618	9614	9610 9612	9606 9608	9602	9502
1	421997	Cam feed disc drive lever			●	●	●	●	●		
2	353033	Feed shaft drive collar			●	●	●	●	●		
3	354795—451	Set screw			●	●	●	●	●		
4	421130	Cam feed disc follower			●	●	●	●	●		
5	421138	Torsion spring			●	●	●	●	●		
6	421133	Cam feed disc drive lever cpl.			●	●	●	●	●		
7	421131	Bearing stud			●	●	●	●	●		
8	421945	Tension spring			●	●	●	●	●		
9	421950	Torsion spring			●	●	●	●	●		
10	421949—451	Hinge screw			●	●	●	●	●		
11	421946	Clutch lever cpl.			●	●	●	●	●		
12	514554—451	Screw			●	●	●	●	●		
13	506125	Washer			●	●	●	●	●		
14	421948	Adjusting lever			●	●	●	●	●		
15	421947	Clutch lever			●	●	●	●	●		
16	511213	Retaining ring			●	●	●	●	●		
17	421941	Trasmission lever cpl.			●	●	●	●	●		
18	421129	Trasmission lever shaft (eccentric)			●	●	●	●	●		
19	113467—451	Set screw			●	●	●	●	●		
20	447563	Feed balancing bracket cpl.			●	●	●	●	●		
21	354084	Screw (2)			●	●	●	●	●		
22	507309	Retaining ring			●	●	●	●	●		
23	421989	Bearing stud cpl.			●	●	●	●	●		
24	507343	Retaining ring			●	●	●	●	●		
25	421991	Adjusting lever cpl.			●	●	●	●	●		
26	421863	Bearing stud			●	●	●	●	●		
27	421856	Feed regulator control arm			●	●	●	●	●		
28	421857	Feed regulator control arm (ball)			●	●	●	●	●		
29	421929	Actuating lever			●	●	●	●	●		
30	421978	Eccentring bushing			●	●	●	●	●		
31	421956	Driving arm eccentric			●	●	●	●	●		
32	354085—451	Set screw			●	●	●	●	●		
33	421931	Connection link			●	●	●	●	●		
34	422244	Screw			●	●	●	●	●		
35	511030	Slide block			●	●	●	●	●		
36	511484	Feed regulator cpl.			●	●	●	●	●		
37	351126	Feed regulator set screw			●	●	●	●	●		
38	422214	Feed regulator shaft			●	●	●	●	●		
39	422212	Feed regulator			●	●	●	●	●		
40	514509	Set screw			●	●	●	●	●		
41	514698—451	Nut			●	●	●	●	●		
42	422209	Feed regulator			●	●	●	●	●		
43	421959	Tension spring			●	●	●	●	●		
44	139938	Screw							●		
45	37942	Tension spring							●		





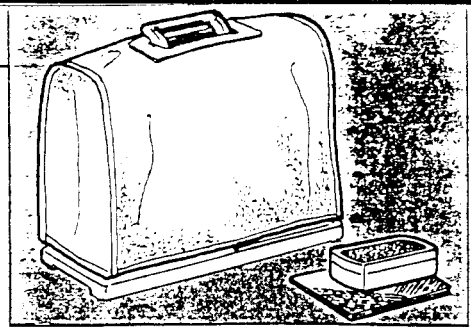


From the library of: Diamond Needle Corp

LIST OF PARTS FOR MACHINES 9500/9600 SERIES

REF. N.	PART. N°	PART DESCRIPTION	9605	9505	9518	9618	9614	9612	9610	9608	9606	9602	9502
1	514733—451	Bushing screw			•	•	•	•	•				
2	422230	Disengaging lever bushing			•	•	•	•	•				
3	421901	Disengaging lever			•	•	•	•	•				
4	421902	Disengaging lever spring			•	•	•	•	•				
5	447866—451	Disc follower cpl.			•	•	•						
	447861—451	Disc follower cpl.							•				
	421732—451	Disc follower cpl.						•					
6	421912	Crescent ring						•	•				
7	421898—000	Hinge stud						•					
	447862—451	Hinge stud			•	•	•						
	447862—452	Hinge stud							•				
8	421897	Disc follower spring			•	•	•	•	•				
9	421896	Disc follower			•	•	•	•	•				
10	511213	Retaining ring			•	•	•	•	•				
11	447831—451	Disc selector dial							•				
	447831—452	Disc selector dial						•					
	447831—453	Disc selector dial					•						
	447832—451	Disc selector dial			•	•							
12	37268	Disc follower stud									•		
13	37276	Disc follower washer	•	•						•	•	•	•
14	44371	Retaining ring	•	•						•	•	•	•
15	422081	Disc follower disengaging lever	•	•						•	•		
16	141787	Screw									•		
17	53641	Nut	•	•						•	•		
18	44471	Screw stud (eccentric)	•	•						•	•		
19	44419	Disc follower positioning spring	•	•						•	•		
20	446610	Disc follower									•		
21	422086	Disc selector cam slide									•		
22	141786	Hinge washer	•	•						•	•		
23	49204	Friction washer	•	•						•	•		
24	422016	Disc selector lever	•	•							•		
25	37244	Disc selector control lever knob spring clip	•	•						•	•		
26	44735	Retaining ring										•	•
27	37262	Disc follower	•	•						•		•	•
28	422426	Disc follower stud	•	•						•		•	•
29	422434	Disc follower stud cpl.										•	•
30	507063	Retaining ring	•	•						•	•		
31	422425	Disc selector cam slide								•			
	353183	Disc selector cam slide	•	•									
32	421859	Disc selector lever								•			
33	447575—451	Selector lever knob	•	•						•	•		
34	37942	Tension spring	•	•									
35	139938	Screw	•	•									

From the library of: Diamond Needle Corp



7-10-11
13-14-15-16 } 1
17-18-19-20

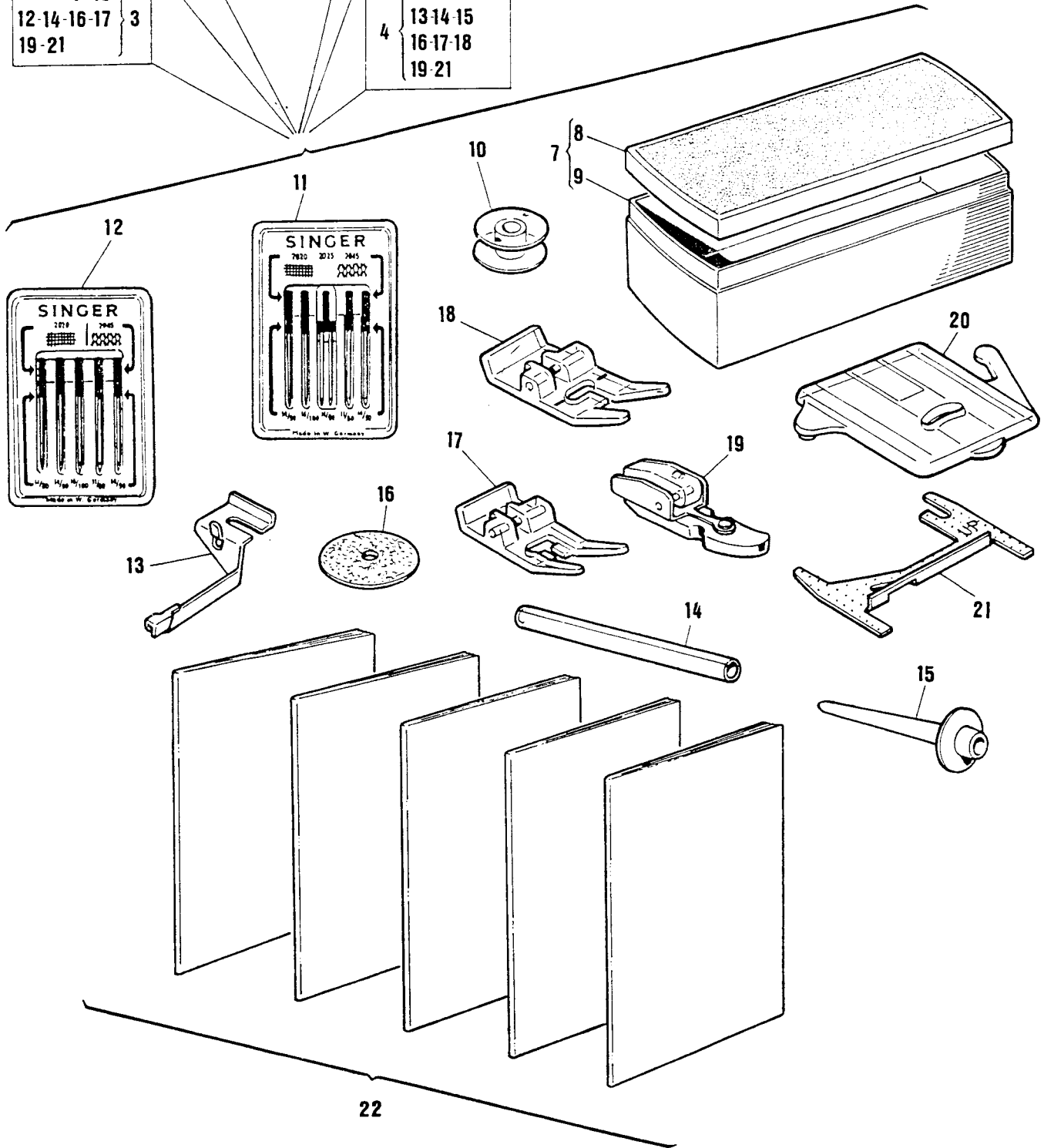
7- 10 12
6 13-14-16-17
18-19-20

7 10
12-14-16-17 } 2
19-20

7-10-12
5 13-14-16-17
18-19-21

7-10
12-14-16-17 } 3
19-21

7-10-11
4 13-14-15
16-17-18
19-21



From the library of: Diamond Needle Corp

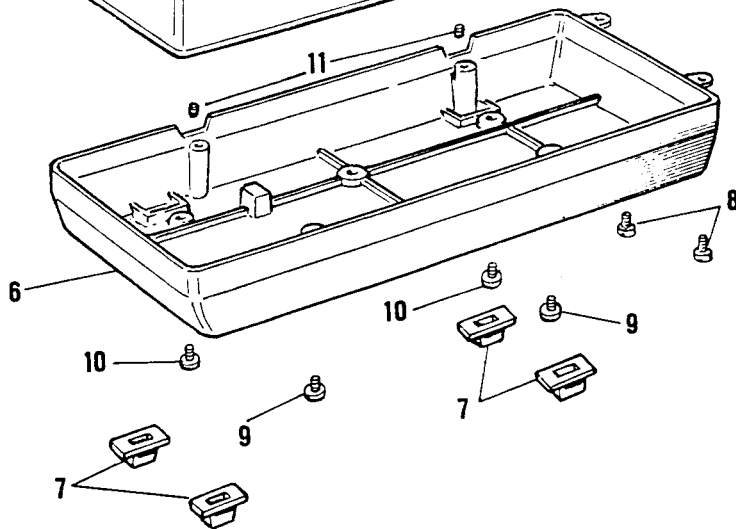
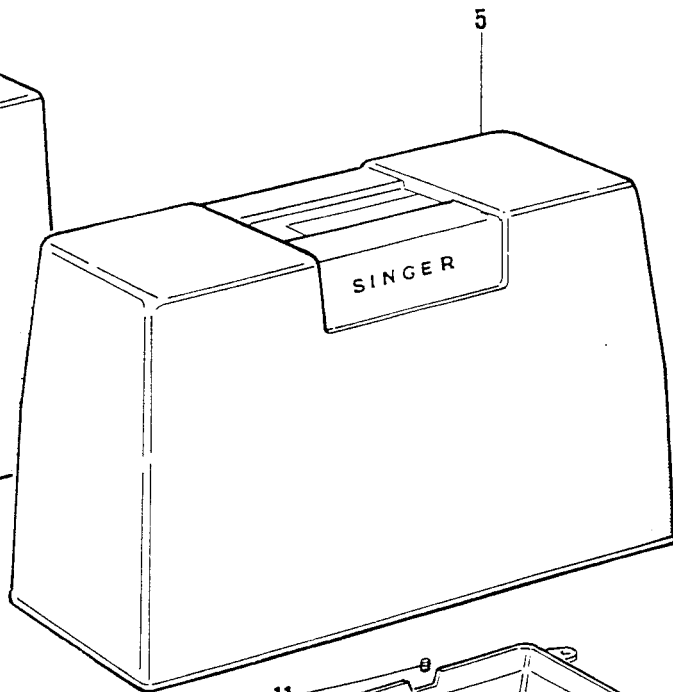
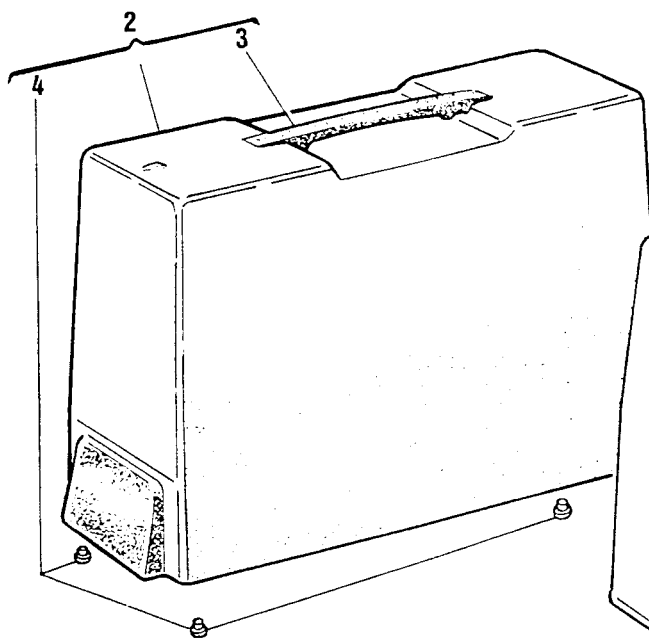
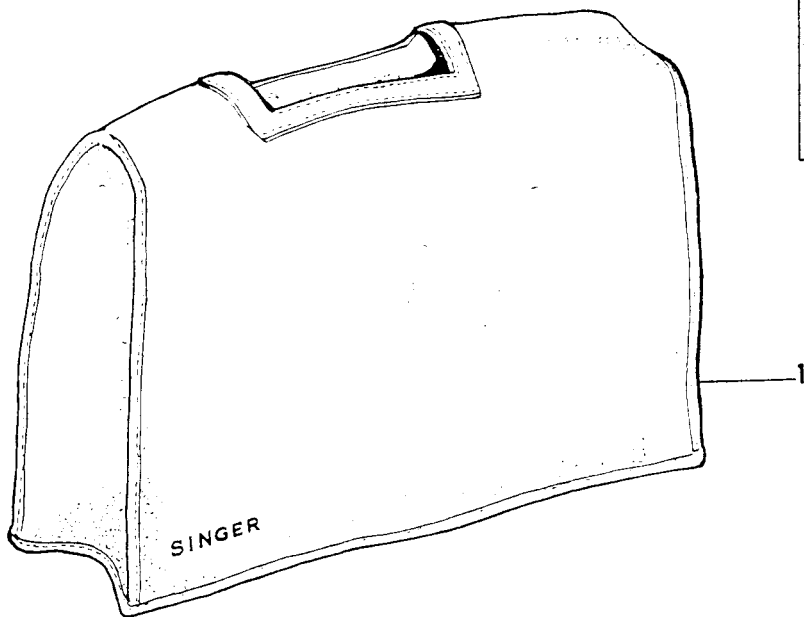
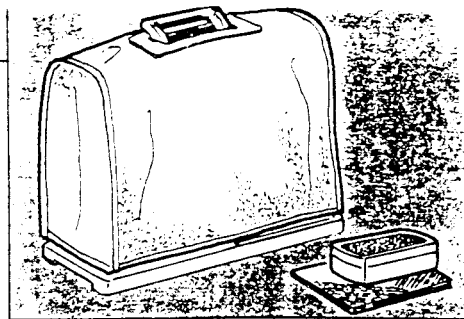
LIST OF PARTS FOR MACHINES 9500/9600 SERIES

REF. N.	PART. N°	PART DESCRIPTION	9605	9505	9518	9618	9614	9610 9612	9606 9608	9602	9502
1	447701—451	Attachment set cpl.									
2	447701—452	Attachment set cpl.				•	•	•	•		
3	447701—454	Attachment set cpl.								•	
4	447701—453	Attachment set cpl.									•
5	447701—456	Attachment set cpl.			•						
6	447701—455	Attachment set cpl.	•								
7	421742—451	Attachment box		•							
8	421743—451	Attachment box cover	•	•	•	•	•	•	•	•	•
9	421744—451	Attachment box case	•	•	•	•	•	•	•	•	•
10	172336	Bobbin (transparent plastic) (2)	•	•	•	•	•	•	•	•	•
11	381275	Needle pack (plastic)	•	•	•	•	•	•	•	•	•
		Containing: cat. 2020 - size 14 and 16	•	•	•	•	•	•	•	•	•
		cat. 2045 - size 14 and 11	•	•	•	•	•	•	•	•	•
		cat. 2025 - size 14	•	•	•	•	•	•	•	•	•
12	103489	Needle pack (plastic)	•	•	•	•	•	•	•	•	•
		Containing: cat. 2020 - size 14 and 16	•	•	•	•	•	•	•	•	•
		cat. 2045 - size 14 and 11	•	•	•	•	•	•	•	•	•
13	381213	Blindstitch guide	•	•	•	•	•	•	•	•	•
14	311800	Spool pin adaptor	•	•	•	•	•	•	•	•	•
15	422250—451	Spool pin adaptor (for twin needle sewing)	•	•	•	•	•	•	•	•	•
16	8879—454	Spool pin felt			•	•	•	•	•	•	•
17	446492—451	Special purpose foot	•	•	•	•	•	•	•	•	•
18	161927—001	Snap-on buttonhole foot	•	•	•	•	•	•	•	•	•
19	507836	Snap-on zipper foot	•	•	•	•	•	•	•	•	•
20	381459—001	Snap-in feed cover plate	•	•	•	•	•	•	•	•	•
21	161894	Needle plate raising shim	•		•	•	•	•	•	•	•
22	Form n°	Refer to table below	•	•	•	•	•	•	•	•	•

From the library of: Diamond Needle Corp

22) Instruction books: languages/form

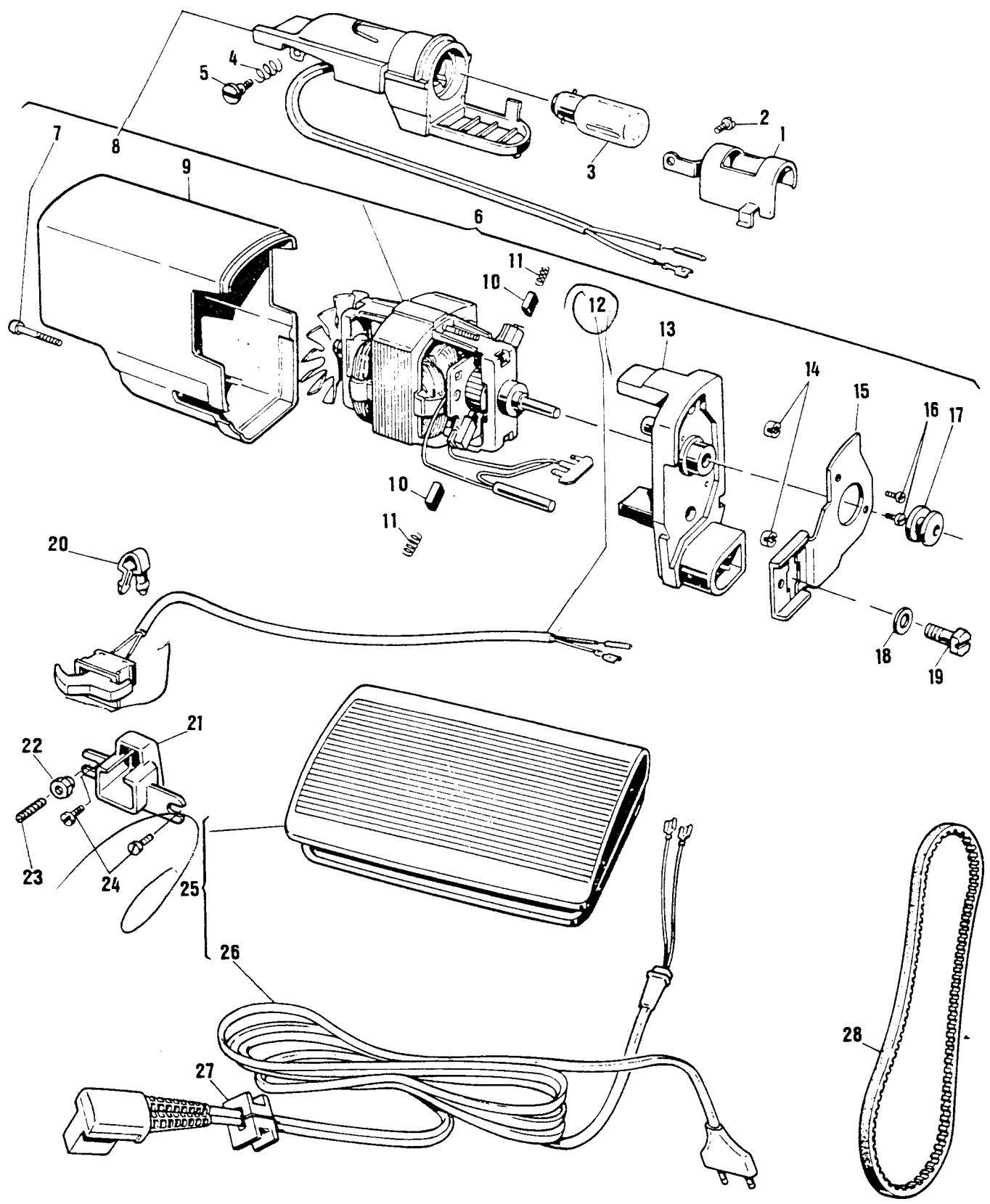
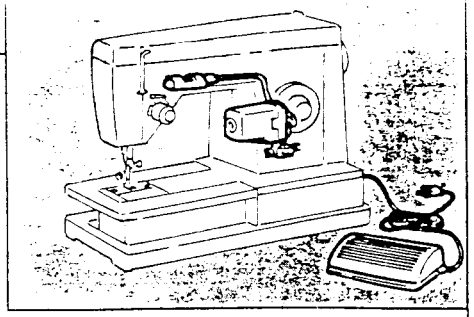
Model	French - Spanish - English	Italian - German - Dutch	Danish - Finnish - Swedish
9502/9602	Form 3001	Form 3002	Form 3003
9505/9605	Form 3004	Form 3005	Form 3009
9606/9608	Form 3006	Form 3007	Form 3008
9610/9612/9614	Form 3010	Form 3011	Form 3012
9518/9618	Form 3015	Form 3016	Form 3017



LIST OF PARTS FOR MACHINES 9500/9600 SERIES

REF. N.	PART. N°	PART DESCRIPTION	9605	9505	9518	9618	9614	9610 9612	9606 9608	9602	9502
1	422249—453	Soft cover	•	•	•	•	•	•	•	•	•
2	148817—025	Carrying case cpl.	•			•	•	•	•	•	
3*	148811—004	Carrying case handle	•			•	•	•	•	•	
4*	148815—451	Carrying case cushion (4)	•			•	•	•	•	•	
5	172346—463	Dust cover	•	•	•	•	•	•	•	•	•
6	422479—453	Bed cover (bottom)		•	•						•
7	352569	Bed leg cushion		•	•						•
8	139986	Screw (2)		•	•						•
9	422483	Screw (4)			•						•
	422483	Screw (2)		•							•
10	139909	Screw (2)		•							•
11	141925	Machine hinge connection set screw		•	•						•

From the library of: Diamond Needle Corp



From the library of: Diamond Needle Corp

LIST OF PARTS FOR MACHINES 9500/9600 SERIES

7

REF. N.	PART. N°	PART DESCRIPTION	9605	9505	9518	9618	9614	9610 9612	9606 9608	9602	9502
1	352624	Light shield	•	•	•	•	•	•	•	•	•
2	354050-451	Light shield screw	•	•	•	•	•	•	•	•	•
3	194120-015	Bulb 220V-15W	•	•	•	•	•	•	•	•	•
	194120-016	Bulb 120V-15W	•	•	•	•	•	•	•	•	•
	194120-017	Bulb 240V-15W	•	•	•	•	•	•	•	•	•
4	603987-001	Light bracket spring	•	•	•	•	•	•	•	•	•
5	603976-001	Light bracket screw	•	•	•	•	•	•	•	•	•
6•	605079-210	Motor cpl.-220V (For Europe)	•	•	•	•	•	•	•	•	•
	605079-212	Motor cpl.-240V (UK - Australia)	•	•	•	•	•	•	•	•	•
	605079-218	Motor cpl.-120 (USA - Canada) <i>→</i>	•	•	•	•	•	•	•	•	•
	988138-231	Motor cpl.-220V (Europe)				•					
	988138-232	Motor cpl.-240V (UK - Australia)				•					
	988138-237	Motor cpl. 120V - (Canada - USA)				•					
7•	604016-001	Dust cover screw	•	•	•	•	•	•	•	•	•
8•	605209-001	Light cpl. (Canada - USA)	•	•	•		•	•	•	•	•
	605209-031	Light cpl.	•	•	•		•	•	•	•	•
	605209-021	Light cpl.				•					
	605209-026	Light cpl. (USA - Canada)				•					
9•	988136-001	Dust cover	•	•	•	•	•	•	•	•	•
10•	619435-004	Brush (2)	•	•	•	•	•	•	•	•	•
11•	619436-001	Brush spring (2)	•	•	•	•	•	•	•	•	•
12•	603985-112	Switch cpl. (USA - Canada)	•	•	•	•	•	•	•	•	•
	603985-110	Switch cpl.	•	•	•	•	•	•	•	•	•
	603985-130	Switch cpl.				•					
	603985-135	Switch cpl. (USA - Canada)				•					
13•	988140-001	End housing	•	•	•		•	•	•	•	•
	988140-002	End housing				•					
14•	603907-001	Nut (2)	•	•	•	•	•	•	•	•	•
15•	604233-001	Mounting bracket	•	•	•	•	•	•	•	•	•
16•	603956-001	Tapping screw (2)	•	•	•	•	•	•	•	•	•
17•	988176-001	Pulley	•	•	•	•	•	•	•	•	•
18	604018-002	Washer	•	•	•	•	•	•	•	•	•
19	604020-001	Screw	•	•	•	•	•	•	•	•	•
20	352745	Clip	•	•	•	•	•	•	•	•	•
21	604102-001	Switch enclosure	•	•	•	•	•	•	•	•	•
22	514732-451	Nut	•			•	•	•	•		
23	514731	Screw	•			•	•	•	•		
24	352449	Screw (1)	•			•	•	•	•		
	352449	Screw (2)		•	•						•
25•	988274-051	Foot controller - 220V	•	•	•		•	•	•	•	•
	988274-055	Foot controller - 240V	•	•	•		•	•	•	•	•
	988274-057	Foot controller - 240V (Australia only)	•	•	•		•	•	•	•	•
	988274-095	Foot controller - 120V (USA - Canada) <i>WCA →</i>	•	•	•		•	•	•	•	•
163	988275-021	Foot controller - 220V				•					
	988275-024	Foot controller - 240V				•					
	988275-026	Foot controller - 240V (Australia only)				•					
	988275-031	Foot controller - 120V (Canada)				•					
26•	604874-017	Cord cpl. - 240V	•	•	•		•	•	•	•	•
	604874-024	Cord cpl. - 240V (Australia only)	•	•	•		•	•	•	•	•
	604874-023	Cord cpl. - 120V (Canada - USA) <i>NLA</i>	•	•	•		•	•	•	•	•
	604874-025	Cord cpl. - 220V	•	•	•		•	•	•	•	•
	604654-009	Cord cpl. - 240V (Australia only)				•					
	604654-010	Cord cpl. - 220V				•					
	604654-011	Cord cpl. - 240V				•					
	604654-016	Cord cpl. - 120V (Canada - USA)				•					
27	352584	Grommet		•	•						•
28	604136-009	Motor belt	•	•	•	•	•	•	•	•	•

From the library of: Diamond Needle Corp

• Parts to be ordered directly from Bonnières

MARKETING TERRITORIES (Territory Code)

A (105/115 - 220/240 V.)

Aden
Algeria
Angola
Bahrain
Bangladesh
Benin (Dahomey)
Burma
Burundi
Cambodia
Cameroons
Cent. Africa Empire
Chad
Congo (Brazzaville)
Egyptian Arab Republic
Ethiopia
Fiji Islands
Gabon
Gambia
Ghana
Guam
Guinea
Guyana
High Volta
Hong Kong
India
Indonesia
Iran
Iraq
Ivory Coast
Jordan
Kenya
Kuwait
Laos
La Reunion
Lebanon
Liberia
Libya
Malagasy Rep.
Malawi
Malaysia
Mali
Mauritania
Mauritius
Morocco
Mozambique
Niger Repub.
Nigeria
North Yemen
Pakistan
Rhodesia
Saudi Arabia
Senegal
Sierra Leone
Singapore
South Korea
South Yemen
Sri Lanka
Sudan
Syria
Taiwan
Tangiers
Tanzania
Thailand
Togo
Tunisia
Uganda
Upper Volta
Vietnam
Zaire (Kinshasa)
Zambia

B (220V)

South Africa

C (220 or 240 V.)

New Zealand

D (240 V.)

Great Britain
(England, Scotland, Wales)
Malta

E (220 V.)

Netherlands

F (220 V.)

Austria
Belgium
Denmark
Finland
Greece
Italy
Switzerland
W. Germany

G (120 V.)

United States

H (120 V. + 220 V.)

Argentina
Bahamas
Barbados
Bermuda
Bolivia
Brazil
British Honduras
Canal Zone
Chile
Colombia
Costa Rica
Ecuador
El Salvador
French West Indies
Guatemala
Honduras Republic
Jamaica
Mexico
Neth. Antilles
Nicaragua
Panama
Paraguay
Perú
Philippines
Puerto Rico
Surinam
Trinidad & Tobago
Venezuela
Virgin Islands

West Indies
(Antigua, Dominica,
Grenada, Montserrat
St. Christopher, Nevis
Anguilla, St. Lucia,
St. Vincent, St. Kitts)

J (127/220 V.)

Belgium bi-volt
W. Germany bi-volt

K (240 V.)

Australia

L (220 V.)

Norway

M (105 V.)

Japan

N (127/220 V.)

France bi-volt
Non mandatory
countries bi-volt

O (120 V.)

Canada

P (220 V.)

Albania
France
Gibraltar
Iceland
Israel
Yugoslavia
Luxembourg
Monaco
Portugal
Spain
Turkey

Q (240 V.)

Cyprus

R (220 V.)

Sweden

S (220 V.)

Eire